



**FY25**

**BEHAVIORAL HEALTH  
SERVICES ASSOCIATION  
REPORT**



## Letter from the Executive Director

Dear Colleagues and Partners,

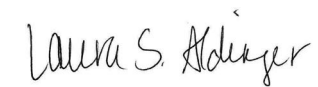
It is with great pride and appreciation that I present the Behavioral Health Services Association of South Carolina's (BHSA) report on services provided by our member agencies. This report reflects our network's collective efforts, achievements, and ongoing commitment to improving behavioral health outcomes across South Carolina.

As Executive Director of BHSA, I have the privilege of witnessing firsthand the dedication and innovation our member agencies bring to their communities through coalitions, collaborations, and partnerships. This report highlights the diverse programs, services, and initiatives that define our shared mission—to provide accessible, high-quality behavioral health care to those in need.

Each agency profiled in this report plays a vital role in addressing the complex behavioral health challenges facing our state. From expanding access to care and integrating new treatment models, to fostering community partnerships and advocating for policy change, our members continue to lead with compassion and purpose. I invite you to explore the information on the following pages, from a local level to the state level, and the positive impact within your communities. Whether you are a stakeholder, policymaker, provider, or community member, we hope this report serves as a valuable resource and a testament to the power of collaboration in behavioral health.

Thank you for your continued support of BHSA and the agencies we represent. Together, we are building a stronger, healthier future for all South Carolinians.

Warm regards,



Laura S. Aldinger  
*Executive Director*

Behavioral Health Services Association of South Carolina

## Table of Contents

Compliance with Federal and State Regulations	6	Shoreline Behavioral Health Services	66
Primary Programs and Services Offered by Agencies	7	Sumter Behavioral Health Services	68
Primary Prevention Standards	8	The Forrester Center for Behavioral Health	70
South Carolina Statewide Numbers	10	Tri-County Commission on Alcohol and Drug Abuse	72
Centers & Services	12	Trinity Behavioral Care	74
County Listings	14	Westview Behavioral Health Services	76
<b>Centers</b>		<b>Data Sources</b>	<b>78</b>
Aiken Center	16		
ALPHA Behavioral Health Center	18		
Anderson / Oconee Behavioral Health Services	20		
Axis I Center of Barnwell	22		
Behavioral Health Services of Pickens County	24		
Charleston Center	26		
Cherokee County Commission on Alcohol & Drug Abuse	28		
Circle Park Behavioral Health Services	30		
Clarendon Behavioral Health Services	32		
Cornerstone	34		
Counseling Services of Lancaster	36		
Dorchester Alcohol and Drug Commission	38		
Ernest E. Kennedy Center	40		
Fairfield Behavioral Health Services	42		
GateWay Counseling Center	44		
Georgetown County Alcohol & Drug Abuse Commission	46		
Hazel Pittman Center	48		
Healthy U Behavioral Health Services	50		
Keystone Substance Abuse Services	52		
LRADAC	54		
New Life Center	56		
Nexus Care of Beaufort County	58		
Phoenix Center	60		
Pillars4Hope	62		
Rubicon Family Counseling Center	64		

## Compliance with Federal and State Regulations

### Agency Requirements:

- SC Department of Public Health (DPH) licensure for facilities of chemically dependent and addicted persons. Regulation 60-93
- National accreditation through one of the following:
  - CARF – Commission on Accreditation of Rehabilitation Facilities
  - Joint Commission
- Funding and compliance contract requirements through the Department of Behavioral Health and Developmental Disabilities Office of Substance Use Services (OSUS)
- Other agency DPH requirements based on additional services provided such as lab services for drug screens (CLIA waiver) and Medication Assisted Treatment (Pharmacy component)

### Treatment Staffing Requirements:

- License through SC Department of Labor, Licensing, and Regulation as an Addictions Counselor, Professional Counselor, or Social Worker (includes associate and supervisor level licenses)
- Certification by the Addiction Professionals of South Carolina or the National Association of Addiction and Drug Abuse Counselors as an Alcohol and Drug Counselor, Certified Addictions Counselor, or Clinical Supervisor
- Certification as a Peer Support Specialist through a state approved course

### Prevention Staffing Requirements:

- Certification by the SC Association of Prevention Professionals and Advocates
- Local agencies are required to have Certified Prevention staff in each county

### Funding Sources:

- Substance Abuse Mental Health Services Administration (SAMHSA) Substance Use Prevention Treatment Recovery Services Block Grant through OSUS
- State Opioid Response Grant through OSUS
- State funds allocated through the OSUS state budget
- Alcohol Excise Tax Funding through each county based on census data
- SC Opioid Response Funds (political subdivision and discretionary funding)
- Various federal and state grant (HRSA, Duke Endowment, SAMHSA, etc.) awards at the local agency level
- Payments for services by Medicaid, Medicaid Managed Care organizations, commercial insurance, OSUS, and client fees

## Primary Programs and Services Offered by Agencies

### Prevention

Community-based education and outreach programs aimed at reducing substance use before it starts—especially among youth and families.

### Peer Support Services

Recovery support provided by certified individuals with lived experience, helping clients stay engaged and navigate treatment systems.

### UDS (Urine Drug Screening) Services

Urine drug screening and lab testing to monitor substance use, support treatment planning, and meet legal or clinical requirements.

### Case Management

Coordinated care that connects individuals to housing, employment, medical services, and other supports essential for recovery.

### ADSAP (Alcohol and Drug Safety Action Program)

State-mandated program for individuals convicted of DUI or related offenses, including assessment, education, and treatment.

### Outpatient Services

Flexible treatment options allowing individuals to live at home while attending scheduled therapy, group sessions, or intensive outpatient care.

### Co-Occurring Services

Integrated treatment for individuals with both substance use and mental health disorders, ensuring both conditions are addressed together.

### Mental Health Services

Access to psychiatric care, counseling, and medication management, often in collaboration with local mental health centers.

### School-Based Services

Prevention and early intervention programs delivered in schools, supporting youth at risk for substance use or behavioral challenges.

### Jail / Detention Center Services

Treatment and education provided within correctional settings, including screening, therapy, and reentry planning.

### MAT (Medication-Assisted Treatment)

Combines medications (e.g., buprenorphine, methadone) with counseling to treat opioid and alcohol use disorders.

### Medical Services

Physical health care integrated into treatment settings, including assessments, medication management, and coordination with primary care.

### Withdrawal Management

Short-term medical support to safely manage withdrawal symptoms and stabilize individuals before entering longer-term treatment.

### Residential Treatment

Structured, live-in programs offering intensive therapy and support for individuals needing a higher level of care.

### Psychiatric Inpatient Hospital

24/7 psychiatric care for individuals experiencing acute mental health crises, often involving co-occurring substance use disorders.

## Primary Prevention Standards

Primary prevention refers to efforts designed to stop substance use before it begins. Rather than focusing on treatment after a problem has developed, primary prevention addresses the underlying risk and protective factors that influence whether individuals initiate alcohol or drug use. These efforts operate at multiple levels — individual, family, school, and community — and are grounded in behavioral science and public health research.

Primary prevention services are based on an annual needs assessment in the local community that includes data from key stakeholders, community surveys, demographic analysis, analysis of indicators, and review of individual data. Primary prevention services are provided for the general population, as well as for youth and adults who might be at risk for substance misuse but are not necessarily in need of treatment service.

Agencies/organizations/coalitions provide services in the following six Center for Substance Abuse Prevention (CSAP) Outcome-Focused Primary Prevention Service Activities:

### Six CSAP Strategies & Rank Ordered South Carolina State Data:

#### 1. Information Dissemination:

*Reached 236,065 Residents in FY25*

This strategy provides knowledge and increases awareness of alcohol and other drug (AOD) use, substance use disorders (SUDs), as well as their effects on individuals, families, and communities. It also provides knowledge and increases awareness of available prevention and treatment programs and services.

#### 2. Environmental:

*Reached 54,853 Residents in FY25*

The Environmental strategy establishes or changes written and unwritten community standards, codes, and attitudes, thereby influencing incidence and prevalence of the abuse of alcohol, tobacco, and other drugs used. Examples are preventing underage sale of tobacco and tobacco products; preventing underage alcoholic beverage sales and social access to alcohol; establishing and implementing AOD-free policies; changing

environmental codes, ordinances, regulations, and legislation; and public policy efforts, which might include influencing enforcement of laws.

#### 3. Alternatives:

*Reached 35,443 Residents in FY25*

Alternatives provide for the participation of target populations in activities that exclude AOD use. Constructive and healthy activities offset the attraction to alcohol, tobacco, and other drugs. Examples of activities conducted, and methods used for this strategy include community service activities; youth/adult leadership activities; and AOD-free social and recreational events.

#### 4. Education:

*Reached 34,858 Residents in FY25*

AOD Prevention Education involves two-way communication and is interactive between the educator or facilitator, and the participants. Activities under this strategy affect critical life and social skills, including decision making, refusal skills, critical analysis, and systematic judgment abilities. Examples of activities conducted for this strategy include classroom and/or small-group sessions (all

ages); parenting and family-management classes; education programs for youth groups; and children of substance abusers' groups.

#### 5. Community-Based Process:

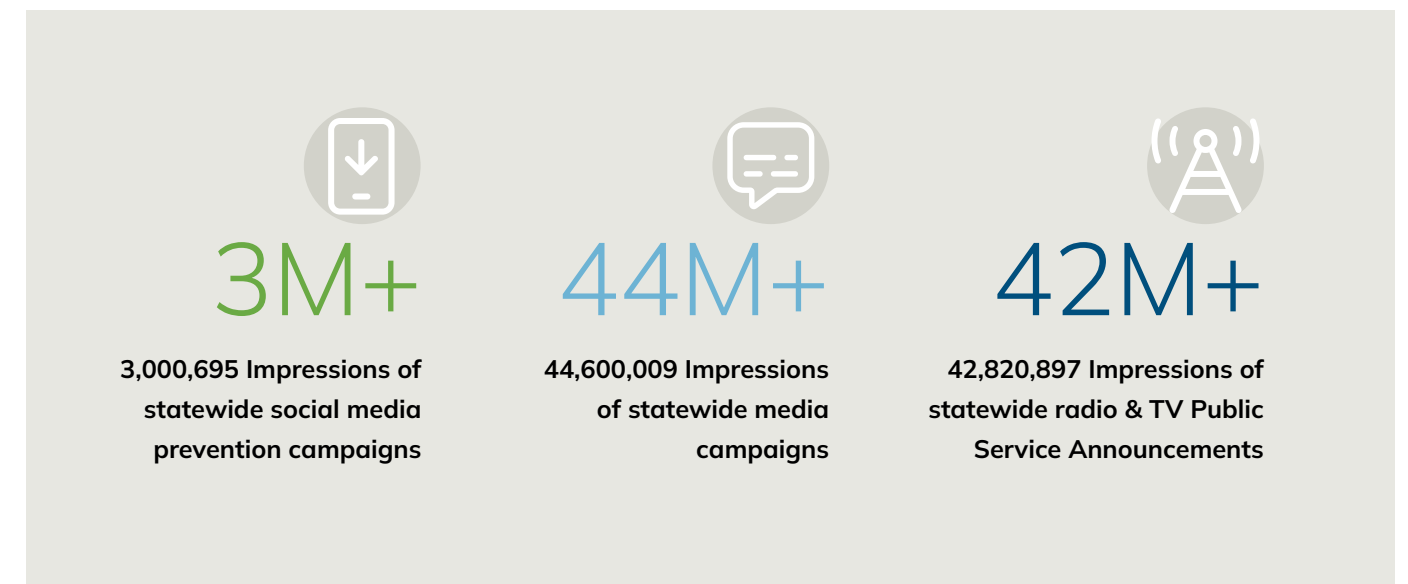
*Reached 19,275 Residents in FY25*

The Community-Based Process strategy enhances the ability of the community to more effectively provide prevention and treatment services for substance use disorders. This strategy provides ongoing networking activities and technical assistance to community groups or agencies. Activities in this strategy include organizing, planning, implementation, interagency collaboration, coalition building, and networking. Examples of activities for this strategy include accessing services and funding, community teams/coalitions, community team activities, and training/technical assistance for coalitions.

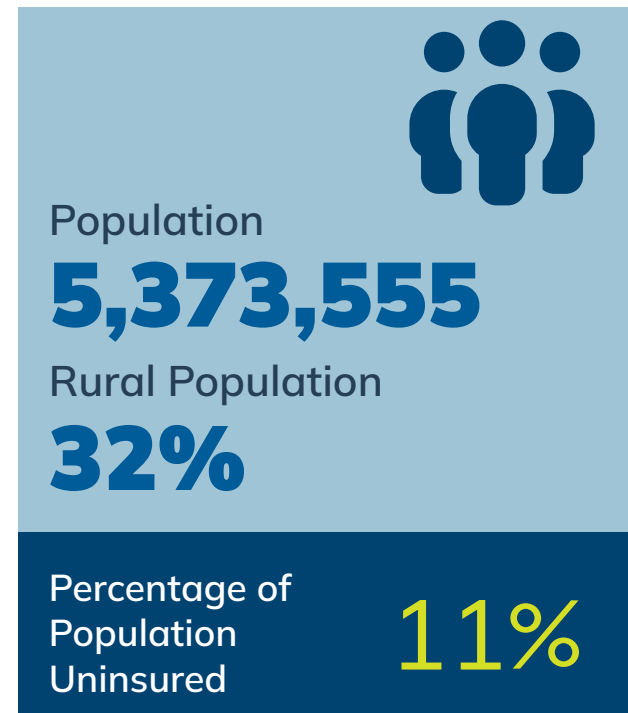
#### 6. Problem Identification and Referral:

*Reached 1,166 Residents in FY25*

The Problem Identification and Referral strategy aims to identify those who have indulged in illegal/age-inappropriate use of tobacco or alcohol, and those who have indulged in the first use of illicit drugs, to assess whether their behavior can be reversed through education. Examples of activities conducted, and methods used for this strategy include employee assistance programs, student assistance programs, and tobacco education programs.

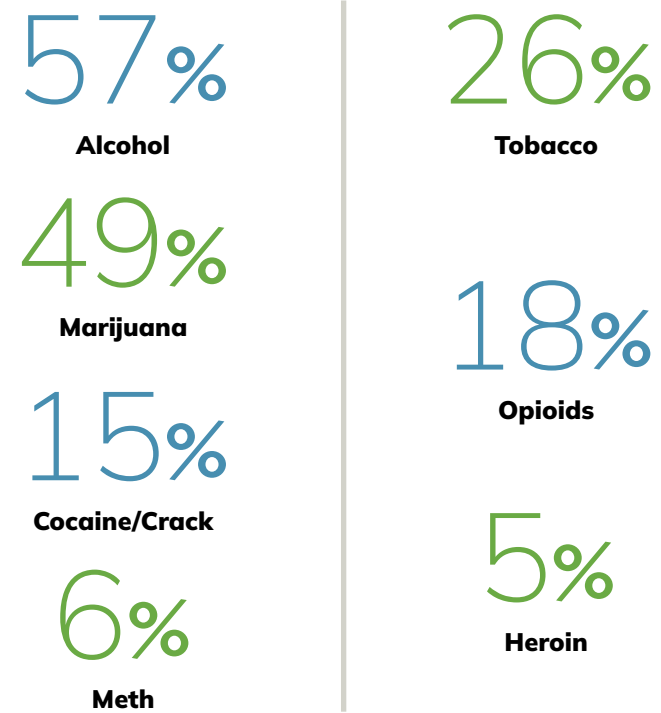


# South Carolina Statewide Numbers



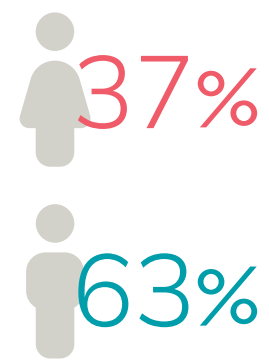
## Substance Use Trends

Substance use among patients admitted

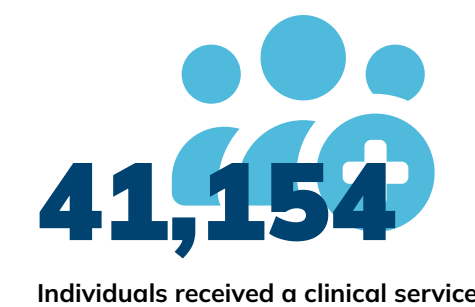
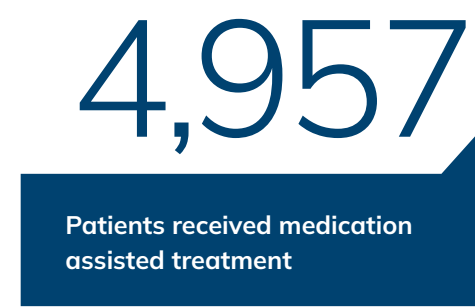
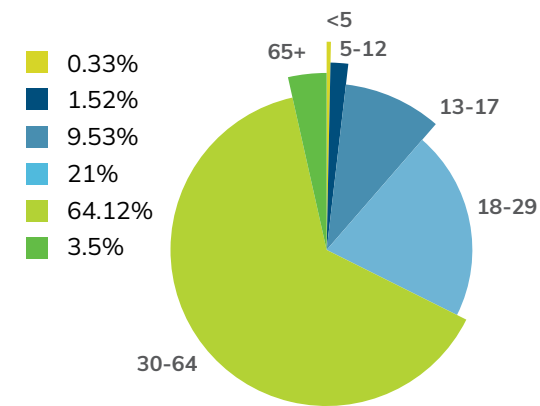


## TREATMENT

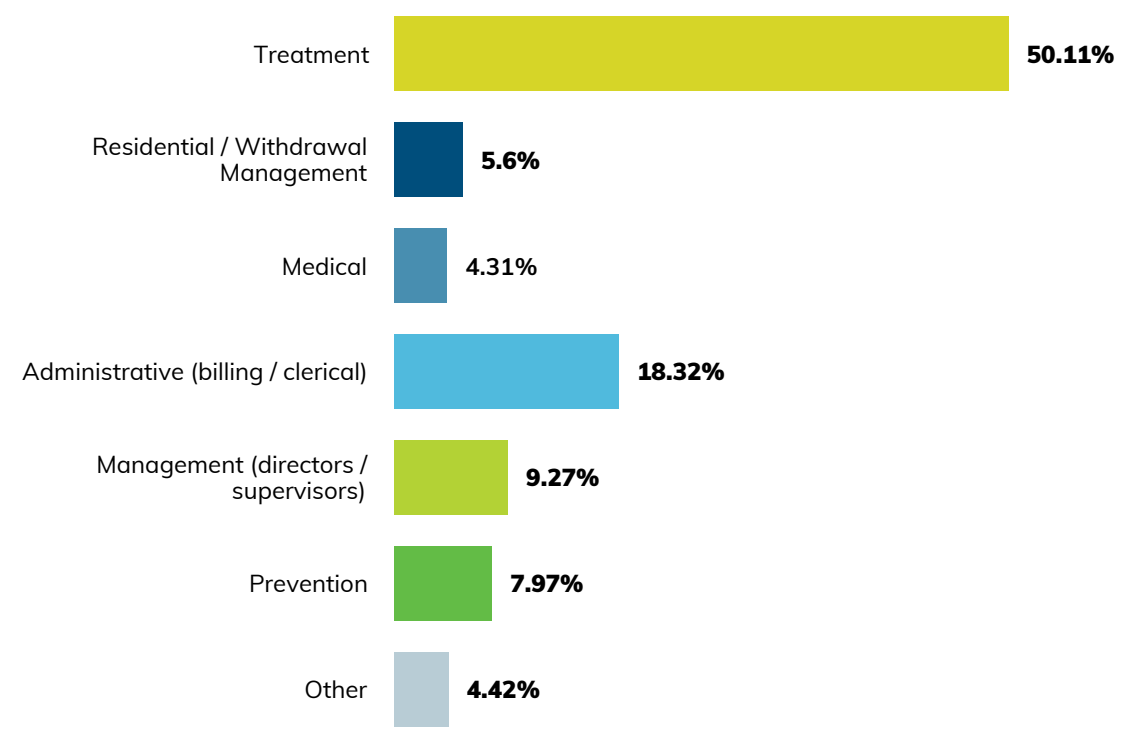
### Patient Makeup



### Percentage of Ages of Patients Served



### Full-Time Employment Classification



Scan the QR code to learn more.



# BHSA CENTERS & SERVICES

	Prevention	Peer Support Services	UDS (Urine Drug Screening) Services	Case Management
Aiken Center	■	■	■	■
ALPHA Behavioral Health Center	■	■	■	■
Anderson / Oconee Behavioral Health Services	■	■	■	■
Axis   Center of Barnwell	■	■	■	■
Behavioral Health Services of Pickens County	■	■	■	■
Charleston Center	■	■	■	■
Cherokee County Commission on Alcohol & Drug Abuse	■	■	■	■
Circle Park Behavioral Health Services	■	■	■	■
Clarendon Behavioral Health Services	■	■	■	■
Cornerstone	■	■	■	■
Counseling Services of Lancaster	■	■	■	■
Dorchester Alcohol and Drug Commission	■	■	■	■
Ernest E. Kennedy Center	■	■	■	
Fairfield Behavioral Health Services	■	■	■	■
GateWay Counseling Center	■	■	■	
Georgetown County Alcohol & Drug Abuse Commission	■	■	■	■
Hazel Pittman Center	■	■	■	■
Healthy U Behavioral Health Services	■	■	■	■
Keystone Substance Abuse Services	■	■	■	■
LRADAC	■	■	■	■
New Life Center	■	■	■	
Nexus Care of Beaufort County	■	■	■	■
Phoenix Center	■	■	■	■
Pillars4Hope	■	■	■	■
Rubicon Family Counseling Center	■	■	■	■
Shoreline Behavioral Health Services	■	■	■	■
Sumter Behavioral Health Services	■	■	■	■
The Forrester Center for Behavioral Health	■	■	■	■
Tri-County Commission on Alcohol and Drug Abuse	■	■	■	■
Trinity Behavioral Care	■	■	■	■
Westview Behavioral Health Services	■	■	■	■

	ADSAP (Alcohol and Drug Safety Action Program)	Outpatient Services	Co-Occurring Services	Mental Health Services	School-Based Counseling	Jail / Detention Center Services	MAT (Medication-Assisted Treatment)	Medical Services	Withdrawal Management	Residential Treatment	Psychiatric Inpatient Hospital
Aiken Center	■	■	■			■	■	■			
ALPHA Behavioral Health Center	■	■	■	■	■	■	■	■			
Anderson / Oconee Behavioral Health Services	■	■	■			■	■				
Axis   Center of Barnwell	■	■	■			■	■	■			
Behavioral Health Services of Pickens County	■	■	■	■	■	■	■	■			
Charleston Center	■	■	■	■	■	■	■	■	■	■	
Cherokee County Commission on Alcohol & Drug Abuse	■	■			■	■	■				
Circle Park Behavioral Health Services	■	■	■	■	■		■	■		■	
Clarendon Behavioral Health Services	■	■	■	■	■	■	■	■			
Cornerstone	■	■			■		■				
Counseling Services of Lancaster	■	■	■	■		■	■	■			
Dorchester Alcohol and Drug Commission	■	■	■	■	■		■	■			
Ernest E. Kennedy Center	■	■					■	■			
Fairfield Behavioral Health Services	■	■			■	■	■	■			
GateWay Counseling Center	■	■	■				■				
Georgetown County Alcohol & Drug Abuse Commission	■	■	■				■				
Hazel Pittman Center	■	■				■	■	■			
Healthy U Behavioral Health Services	■	■	■		■	■	■				
Keystone Substance Abuse Services	■	■	■		■		■	■	■	■	
LRADAC	■	■	■		■	■	■	■	■	■	
New Life Center	■	■					■	■			
Nexus Care of Beaufort County	■	■	■		■	■	■				
Phoenix Center	■	■	■		■	■	■		■	■	
Pillars4Hope	■	■		■			■				
Rubicon Family Counseling Center	■	■	■	■		■	■				
Shoreline Behavioral Health Services	■	■	■	■			■	■			
Sumter Behavioral Health Services	■	■	■	■	■	■	■	■			
The Forrester Center for Behavioral Health	■	■	■				■	■			
Tri-County Commission on Alcohol and Drug Abuse	■	■	■	■	■		■	■			■
Trinity Behavioral Care	■	■			■	■	■	■			
Westview Behavioral Health Services	■	■	■	■	■	■	■	■			

# COUNTY LISTINGS

COUNTY	CENTER NAME	PAGE
Abbeville	Cornerstone	34
Aiken	Aiken Center	16
Allendale	New Life Center	56
Anderson	Anderson / Oconee Behavioral Health Services	20
Bamberg	Tri-County Commission on Alcohol and Drug Abuse	72
Barnwell	Axis   Center of Barnwell	22
Beaufort	Nexus Care of Beaufort County	58
Berkeley	Ernest E. Kennedy Center	40
Calhoun	Tri-County Commission on Alcohol and Drug Abuse	72
Charleston	Charleston Center	26
Cherokee	Cherokee County Commission on Alcohol & Drug Abuse	28
Chester	Hazel Pittman Center	48
Chesterfield	ALPHA Behavioral Health Center	18
Clarendon	Clarendon Behavioral Health Services	32
Colleton	Pillars4Hope	62
Darlington	Rubicon Family Counseling Center	64
Dillon	Trinity Behavioral Care	74
Dorchester	Dorchester Alcohol and Drug Commission	38
Edgefield	Cornerstone	34
Fairfield	Fairfield Behavioral Health Services	42
Florence	Circle Park Behavioral Health Services	30
Georgetown	Georgetown County Alcohol & Drug Abuse Commission	46
Greenville	The Phoenix Center	60
Greenwood	Cornerstone	34
Hampton	New Life Center	56
Horry	Shoreline Behavioral Health Services	66
Jasper	New Life Center	56
Kershaw	ALPHA Behavioral Health Center	18
Lancaster	Counseling Services of Lancaster	36
Laurens	GateWay Counseling Center	44
Lee	ALPHA Behavioral Health Center	18
Lexington	LRADAC	54
Marion	Trinity Behavioral Care	74
Marlboro	Trinity Behavioral Care	74
McCormick	Cornerstone	34
Newberry	Westview Behavioral Health Services	76
Oconee	Anderson / Oconee Behavioral Health Services	20
Orangeburg	Tri-County Commission on Alcohol and Drug Abuse	72
Pickens	Behavioral Health Services of Pickens County	24
Richland	LRADAC	54
Saluda	Westview Behavioral Health Services	76
Spartanburg	The Forrester Center for Behavioral Health	70
Sumter	Sumter Behavioral Health Services	68
Union	Healthy U Behavioral Health Services	50
Williamsburg	Circle Park Behavioral Health Services	30
York	Keystone Substance Abuse Services	52



**BHSA**  
**SOUTH CAROLINA**  
**CENTERS**



Aiken Center's vision for Aiken County continues to be that residents understand substance use disorders and that we join together to offer prevention, treatment and ongoing recovery support. The commitment to a broad continuous span of services has never been more important than it is now. Certified Prevention Specialists, licensed and certified Clinical Counselors, certified Peer Support Specialists, Administrators and educators join together each day,

providing accessible, high-quality care for families across Aiken County. Together with a set of dedicated community partners, we're making a positive impact toward a healthier, prosperous community.

**OUR MISSION**

**AIKEN CENTER PROMOTES HOPEFUL, HEALTHY LIVING AND FREEDOM FROM SUBSTANCE MISUSE THROUGH PREVENTION, TREATMENT, AND RECOVERY SUPPORT.**

**Aiken County Health Impact Data**



Population  
**177,662**  
Rural Population  
**37%**

Percentage of Population Uninsured  
**11%**

**Substance Use Trends**

Substance use among patients admitted

**48%**  
Alcohol

**29%**  
Tobacco

**42%**  
Marijuana

**28%**  
Methamphetamine

**OUTCOMES**

**100%**

Reported they would recommend the services of our agency.

**100%**

Reported they were satisfied with services they received.

**100%**

Reported at post-discharge their overall alcohol and substance use was reduced or in remission.

**PREVENTION**

**2,572**

Individuals reached through speaking engagements

**863**

Boxes of Narcan distributed to the community

**1M+**

1,024,939 impressions reached by prevention efforts (social media, news, PSAs/radio)

**10.4K+**

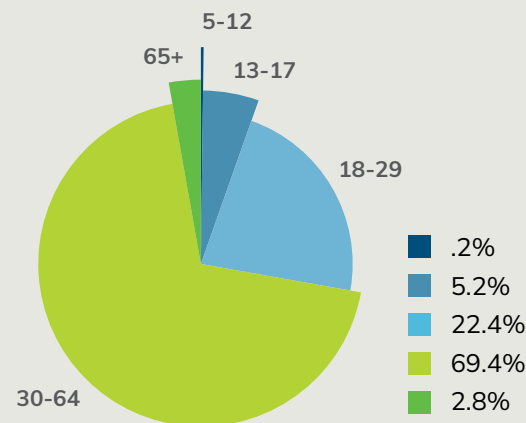
Participants of Health Fairs

**TREATMENT**

**Patient Makeup**

**35%**  
**65%**

**Percentage of Ages of Patients Served**



**83**

Patients received medication assisted treatment

**1,067**

Individuals received a clinical service



Scan the QR code to learn more.



**10.4K+**

Participants of Health Fairs



ALPHA Behavioral Health Center proudly delivers prevention, intervention, treatment, and recovery services to strengthen communities across Kershaw, Chesterfield, and Lee counties. For over 50 years, ALPHA has provided accessible, CARF-accredited outpatient care for individuals age five and older, addressing substance use and behavioral/mental health disorders. Guided by its motto "All Life's Problems Have Answers," ALPHA offers personalized treatment including individual, group, and family counseling,

plus Medication Assisted Treatment. Licensed and Certified therapists and Certified Peer Support Specialists provide compassionate, evidence-based care. ALPHA ensures that cost is never a barrier to care, welcoming all individuals regardless of ability to pay, and accepting most insurances, Medicaid, and sliding scale fees.

### OUR MISSION

TO PROVIDE QUALITY SERVICES TO INDIVIDUALS AND THEIR FAMILIES AND/OR SUPPORT SYSTEMS TO REDUCE PROBLEMS ASSOCIATED WITH SUBSTANCE MISUSE/ USE, BEHAVIORAL/MENTAL HEALTH NEEDS AND CO-OCCURRING DISORDERS, IN AN ACCESSIBLE OUTPATIENT SETTING.

#### Chesterfield, Kershaw & Lee County Health Impact Data



Population **127,174**  
Rural Population **67%**

Percentage of Population Uninsured **11%**

#### Substance Use Trends

Substance use among patients admitted

**30%**  
Alcohol

**20%**  
Opioids

**36%**  
Marijuana

**16%**  
Methamphetamine

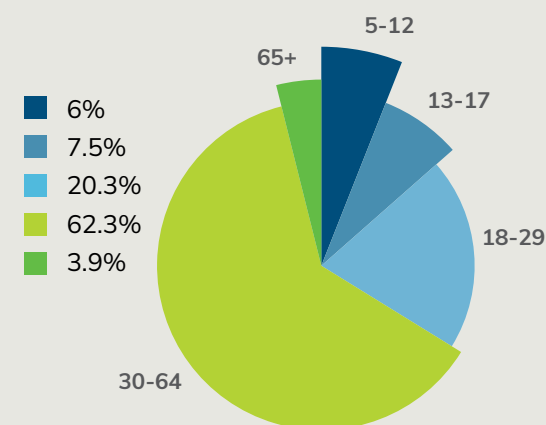
**294** Patients received medication assisted treatment

#### TREATMENT

##### Patient Makeup

**44%**  
**56%**

##### Percentage of Ages of Patients Served



**1,553** Individuals received a clinical service

#### OUTCOMES

**97%**

Reported they would recommend the services of our agency.

**94%**

Reported they were satisfied with services they received.

**96%**

Reported at discharge their overall alcohol and substance use was reduced or in remission.

#### PREVENTION

**547**

Children and youths received substance-free curriculum

**1,790**

Boxes of Narcan distributed to the community

**10.2M+**

10,200,000 impressions made through substance use prevention billboard campaign

**2,544**

Prescription disposal units distributed



Scan the QR code to learn more.





# ANDERSON OCONEE BHS

YOUR LIGHT AT THE END OF THE TUNNEL.

Anderson Oconee Behavioral Health Services will be the provider of choice for the citizens of Anderson and Oconee Counties for Integrated Behavioral Health Services designed to provide a combination of alcohol and other drug and psychosocial rehabilitative services. Our services will empower the citizens to attain and maintain their maximum level of functioning within the community.

## OUR MISSION

ANDERSON OCONEE BEHAVIORAL HEALTH SERVICES WILL EVOLVE INTO THE ROLE OF A COMPREHENSIVE SYSTEM OF PROVIDERS TO INCLUDE PUBLIC, PRIVATE AND SOCIAL SECTORS FOR A CONTINUUM OF BEHAVIORAL HEALTH SERVICES FOR OUR COMMUNITY WHILE MAINTAINING SUCCESSFUL OUTCOMES.

### Anderson & Oconee County Health Impact Data



Population **298,495**  
Rural Population **46%**

Percentage of Population Uninsured **12%**

### Substance Use Trends

Substance use among patients admitted

**70%**  
Alcohol

**50%**  
Tobacco

**55%**  
Marijuana

**16%**  
Methamphetamine

### OUTCOMES

**99%**

Reported at post-discharge they felt good about their quality of their life.

**93%**

Reported at post-discharge their overall alcohol and substance use was reduced or in remission.

**97%**

Reported they were satisfied with services they received.

### PREVENTION

**120**

Students reached during impaired and distracted driving education event

**744**

Boxes of Narcan distributed to the community

**42.3M**

Impressions of prevention billboards, PSA's, enforcement and events

**105**

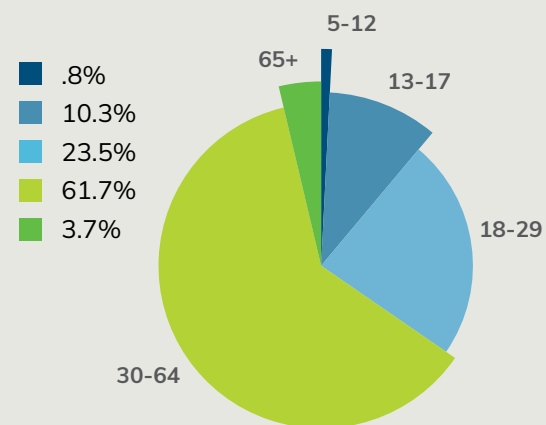
Individuals reached through suicide prevention event sponsorship

### TREATMENT

#### Patient Makeup

**37%**  
**63%**

#### Percentage of Ages of Patients Served



**25**

Patients received medication assisted treatment

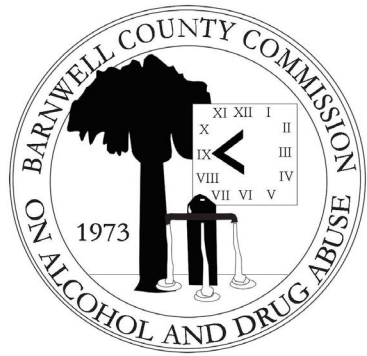
**1,194**

Individuals received a clinical service



Scan the QR code to learn more.





The Axis I Center of Barnwell, a 501(c)(3) organization and the county's designated authority for substance use services, has provided evidence-based prevention, intervention, treatment, and recovery care for over 50 years. The Center offers outpatient counseling for adults and adolescents, MAT for opioid use disorder, and an Intensive Outpatient Program. It also delivers ADSAP services for DUI/BUI offenders and leads coalition-based prevention initiatives addressing substance use, teen pregnancy, and

chronic disease. Accredited by CARF, the agency is a trusted partner dedicated to wellness, resilience, and strong community collaboration.

**OUR MISSION**

**TO PROVIDE AWARENESS, EDUCATION, PREVENTION, INTERVENTION, TREATMENT, AND RECOVERY FOR PERSONS WITH SUBSTANCE USE DISORDERS. THROUGH THESE SERVICES, THE AGENCY WILL ASSIST PERSONS SERVED AND COMMUNITY MEMBERS IN REMOVING THE STIGMA AND NEGATIVE CONSEQUENCES ASSOCIATED WITH SUBSTANCE USE DISORDERS.**

**Barnwell County Health Impact Data**

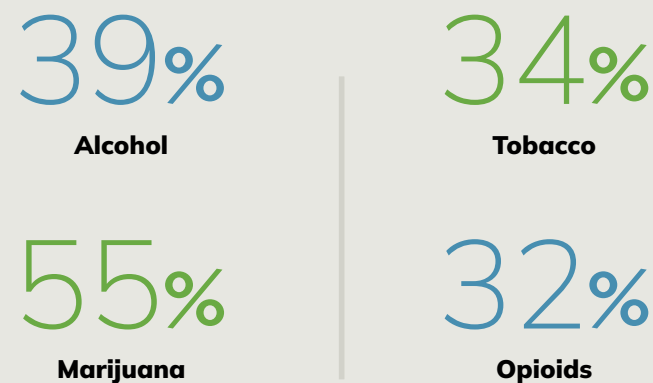


Population **20,447**  
Rural Population **100%**

Percentage of Population Uninsured **13%**

**Substance Use Trends**

Substance use among patients admitted



**OUTCOMES**

**100%**

Reported at assessment update they felt good about their quality of their life.

**100%**

Reported at assessment update they understood the issues that led them into services.

**100%**

Reported at assessment update their overall alcohol and substance use was reduced or in remission.

**PREVENTION**

**68.6K+**

Individuals reached by prevention social media posts

**373**

Boxes of Narcan distributed to the community

**7.1M+**

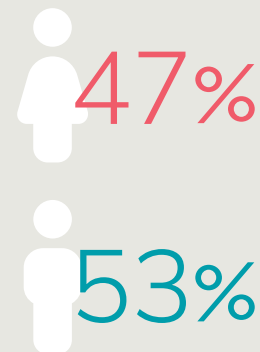
7,159,300 impressions/views of broadcast television opioid media campaign

**372K**

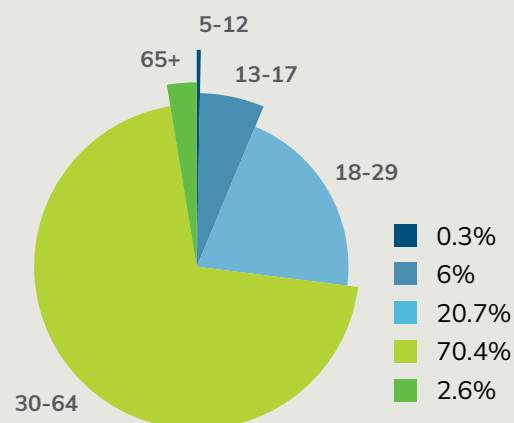
Media impressions delivered through billboard and newspaper campaigns

**TREATMENT**

**Patient Makeup**



**Percentage of Ages of Patients Served**



**90** Patients received medication assisted treatment



Individuals received a clinical service



Scan the QR code to learn more.





Behavioral Health Services of Pickens County is a Private-Non-Profit organization, deemed one of the county authorities on substance abuse in the State. BHSPC is responsible for providing affordable and accessible Prevention, Intervention, and Treatment services to the residents of Pickens County. BHSPC specializes in substance abuse treatment, and behavioral health care, providing treatment for a variety of needs such as trauma, depression, anxiety, domestic violence, and other behavioral health

issues. The agency was established in 1973, and has served Pickens for over 52 years. BHSPC currently employs 46 full time and 4 contract employees. In FY25, BHSPC served approximately 1,700 clients, including children and adolescents under the age of 18. We offer services on a sliding scale fee based on income.

**OUR MISSION**

**TO PROVIDE EFFECTIVE AND EFFICIENT SUBSTANCE USE AND BEHAVIORAL HEALTH PREVENTION, INTERVENTION AND TREATMENT SERVICES.**

**Pickens County Health Impact Data**

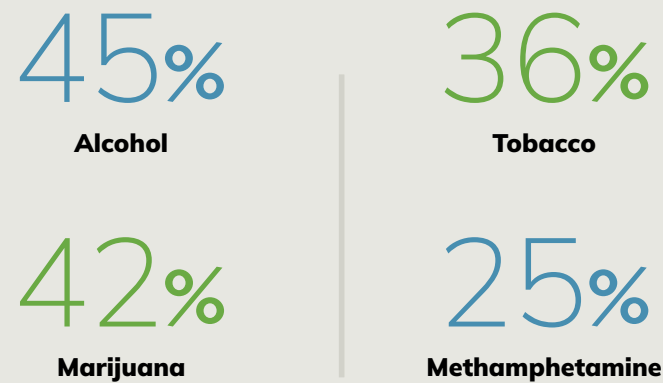


Population  
**135,495**  
Rural Population  
**38%**

Percentage of Population Uninsured  
**12%**

**Substance Use Trends**

Substance use among patients admitted



**OUTCOMES**

**93%**

Reported at discharge they felt good about their quality of their life.

**95%**

Reported they were satisfied with services they received.

**96%**

Reported they would recommend the services of our agency.

**PREVENTION**

**1,500**

Community members reached through youth-led initiatives

**449**

Boxes of Narcan distributed to the community

**1,100**

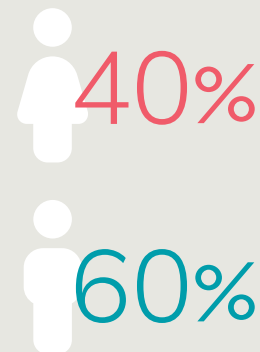
Students reached through 15 classroom presentations on substance misuse

**2,000**

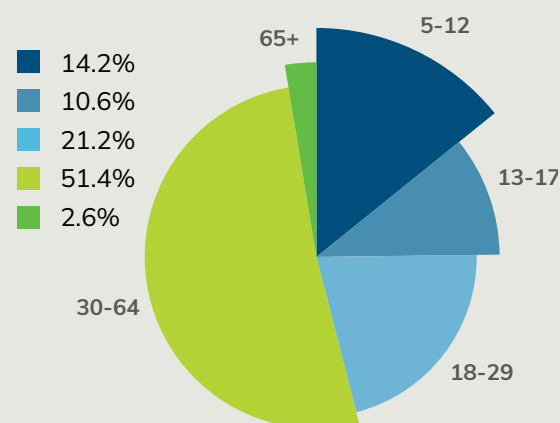
Residents received prevention, recovery support and wellness messages

**TREATMENT**

**Patient Makeup**



**Percentage of Ages of Patients Served**



**119**

Patients received medication assisted treatment

**1,646**

Individuals received a clinical service



Scan the QR code to learn more.





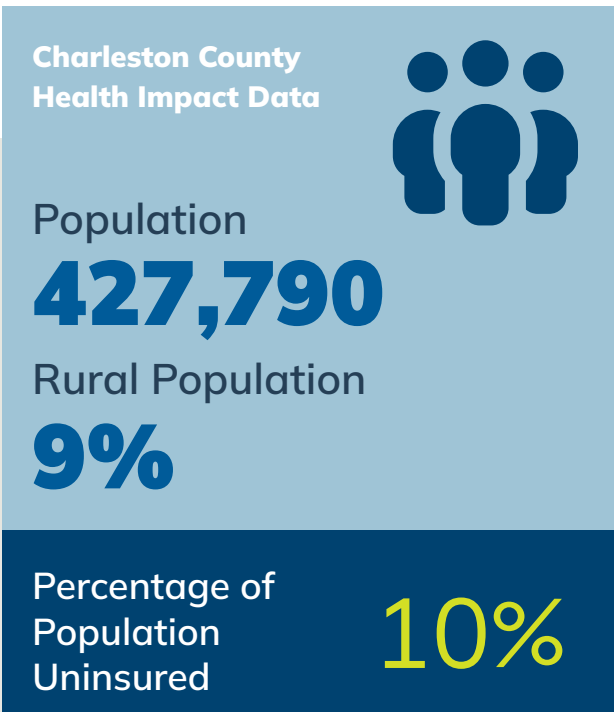
Charleston Center, A Division of Charleston County Government, offers community prevention and numerous levels of substance use treatment services for the citizens of Charleston County and its surrounding communities.

Specifically, we provide services in the following areas: residential care; two units (women with up to two children under the age of five, and co-ed), withdrawal management, outpatient and intensive outpatient (women only, co-ed,

adolescent), MAT, ADSAP, drug court, jailed-based, urine drug screening, and Peer Support. In addition, we provide DSS licensed childcare and services for children with developmental delays whose mothers are participating in the women's residential program.

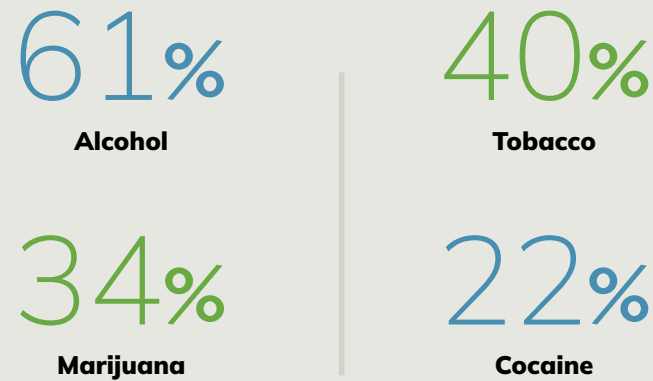
**OUR MISSION**

**TO HELP THE RESIDENTS OF CHARLESTON COUNTY LIVE PRODUCTIVE LIVES, FREE FROM THE IMPACT OF ALCOHOL, OTHER DRUGS, AND ADDICTIVE BEHAVIORS. WE PROMOTE ACTIVE RECOVERY FOR PERSONS WHOSE LIVES ARE AFFECTED BY SUBSTANCE USE DISORDERS.**



**Substance Use Trends**

Substance use among patients admitted

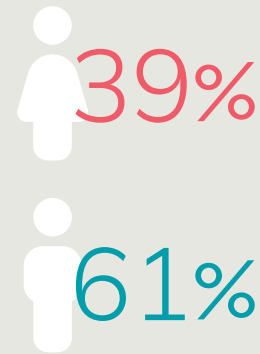


**724** Patients received medication assisted treatment

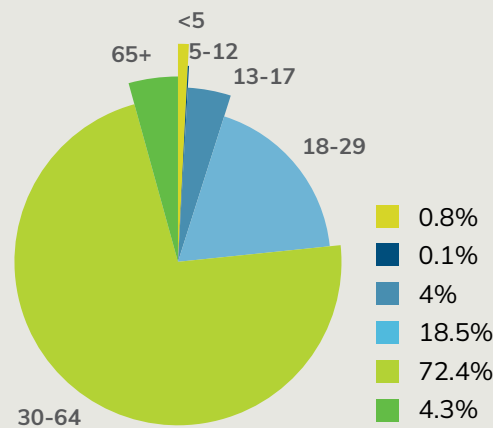
**3,255** Individuals received a clinical service

**TREATMENT**

Patient Makeup



Percentage of Ages of Patients Served



**OUTCOMES**

**95%**

Reported at post-discharge their life was manageable.

**92%**

Reported at post-discharge they were able to handle crisis situations.



Reported at post-discharge their overall alcohol and substance use was reduced or in remission.

**PREVENTION**

**2,142** Medication safety boxes and drug deactivation systems distributed

**3,925** Boxes of Narcan distributed to the community

**7,282** Individuals reached through health fairs and speaking engagements

**87** Health fairs and speaking engagements attended



Scan the QR code to learn more.





Cherokee County Commission on Alcohol and Drug Abuse (CCCADA) provides prevention, intervention, and treatment services to individuals and families impacted by substance use in Cherokee County. We partner with schools, healthcare providers, law enforcement, and community organizations to promote recovery and reduce the stigma of addiction. Through compassionate, evidence-based care and community collaboration, CCCADA works to build healthier lives and a stronger, more resilient community.

**OUR MISSION**

**TO PROVIDE CHEROKEE COUNTY CITIZENS IN NEED, WITH QUALITY, YET AFFORDABLE BEHAVIORAL HEALTH CARE SERVICES.**

**Cherokee County Health Impact Data**



Population  
**56,714**  
Rural Population  
**66%**

Percentage of Population Uninsured  
**11%**

**Substance Use Trends**

Substance use among patients admitted

**38%**  
Alcohol

**45%**  
Tobacco

**67%**  
Marijuana

**34%**  
Methamphetamine

**21** Patients received medication assisted treatment



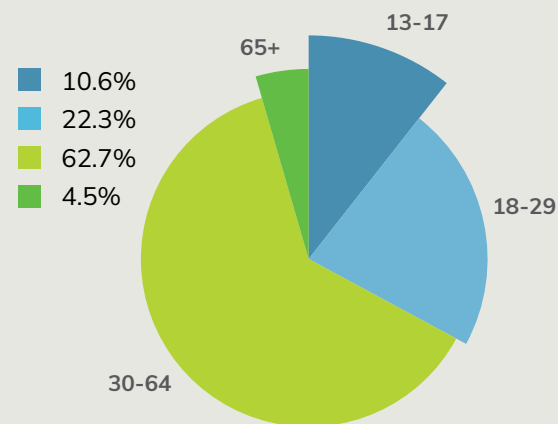
**539** Individuals received a clinical service

**TREATMENT**

**Patient Makeup**

**37%**  
**63%**

**Percentage of Ages of Patients Served**



**OUTCOMES**

**94%**

Reported at discharge they felt good about their quality of their life.

**95%**

Reported they would recommend the services of our agency.

**94%**

Reported at discharge their overall alcohol and substance use was reduced or in remission.

**PREVENTION**

**612** Youth received prevention education through Positive Action sessions

**523** Boxes of Narcan distributed to the community

**4,393** Individuals reached via prevention outreach and information dissemination

**785** Students participated in Prom Bash, a substance-free alternative event



Scan the QR code to learn more.





Circle Park Behavioral Health Services has served as the county authority for substance abuse in Florence County since 1973. As an agency, we offer innovative and effective treatment, intervention, and prevention programs designed to reduce the impact of alcohol, tobacco, and other drugs. Circle Park Behavioral Health Services provides services with the highest degree of professionalism that result in an unparalleled quality of services. Our highly trained staff are dedicated to the delivery of comprehensive alcohol, tobacco,

and other drug abuse services and as such, provide strong leadership to ensure the most effective use of available resources. We provide services at three outpatient locations – Florence, Lake City, and Hemingway, and at our women's residential treatment facility, the Chrysalis Center, in Florence.

**OUR MISSION**

**TO REDUCE THE IMPACT OF ALCOHOL, TOBACCO AND OTHER DRUG ABUSE ON THE CITIZENS OF FLORENCE COUNTY BY PROVIDING HIGH-QUALITY AND COST-EFFECTIVE BEHAVIORAL HEALTH SERVICES.**

**Florence & Williamsburg County Health Impact Data**



Population **167,105**  
Rural Population **48%**

Percentage of Population Uninsured **11%**

**Substance Use Trends**

Substance use among patients admitted

**48%**  
Alcohol

**26%**  
Opioids

**51%**  
Marijuana

**17%**  
Cocaine

**193**

Patients received medication assisted treatment

**1,484**

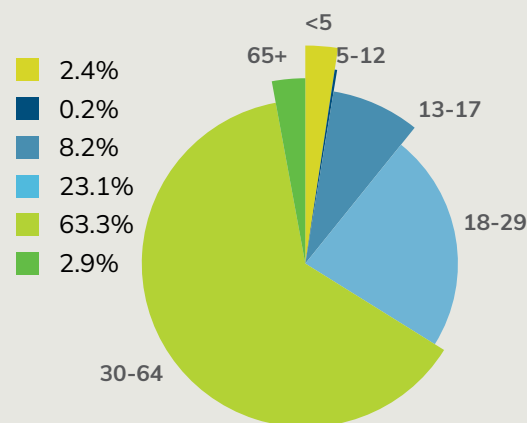
Individuals received a clinical service

**TREATMENT**

**Patient Makeup**

**42%**  
**58%**

**Percentage of Ages of Patients Served**



**OUTCOMES**

**100%**

Reported at post-discharge they felt good about their quality of their life.

**96%**

Reported they were satisfied with services they received.

**75%**

Reported at post-discharge their overall alcohol and substance use was reduced or in remission.

**PREVENTION**

**15.2K**

Individuals reached through education/awareness presentations and events

**496**

Boxes of Narcan distributed to the community

**900K+**

995,695 Media impressions delivered by awareness messages (alcohol, opioids, tobacco/vaping, marijuana)

**306**

Alcohol and tobacco compliance checks conducted



Scan the QR code to learn more.





Clarendon Behavioral Health Services, a 501(c)(3) organization, is the county authority for substance use for Clarendon County providing evidence-based prevention, intervention, treatment, and recovery care for more than 50 years by licensed and credentialed staff. We offer affordable and accessible outpatient services including telehealth and mobile services for the rural community of just over 30,000 citizens. Our citizens have access to psychiatric services for co-occurring and general mental health conditions as

well as access to a Medication Assisted Treatment (MAT) prescriber. We provide Trauma Groups, PTI, ADSAP, Parenting, Jail Services, Drug Court, EAP, Drug Testing and Recovery Support Services. We accept all referrals.

**OUR MISSION**

**TO SERVE THE CITIZENS OF CLARENDON COUNTY WITH AFFORDABLE, ACCESSIBLE AND HIGH-QUALITY BEHAVIORAL HEALTH SERVICES ENHANCING THEIR OVERALL HEALTH.**

**Clarendon County Health Impact Data**

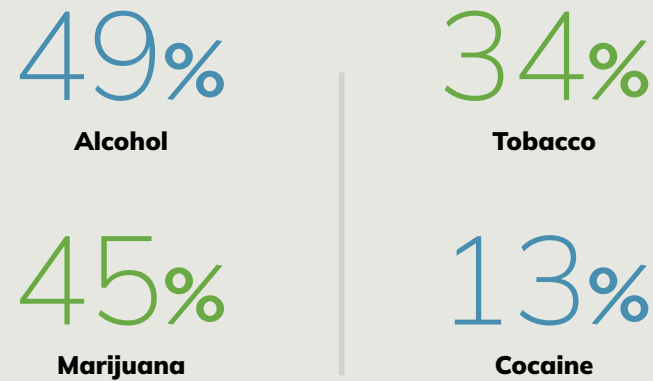


Population  
**31,004**  
Rural Population  
**86%**

Percentage of Population Uninsured  
**13%**

**Substance Use Trends**

Substance use among patients admitted



**OUTCOMES**

**99%**

Reported at discharge they felt good about their quality of their life.

**100%**

Reported at discharge they understood the issues that led them into services.

**82%**

Reported at discharge their overall alcohol and substance use was reduced or in remission.

**PREVENTION**

**136K**

Media impressions delivered by substance use prevention radio ads

**283**

Boxes of Narcan distributed to the community

**955**

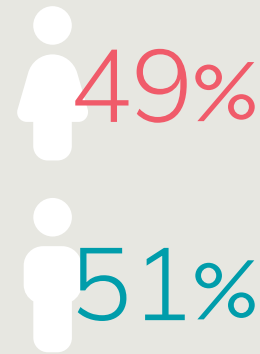
Medication lock boxes and Deterra deactivation kits distributed

**116**

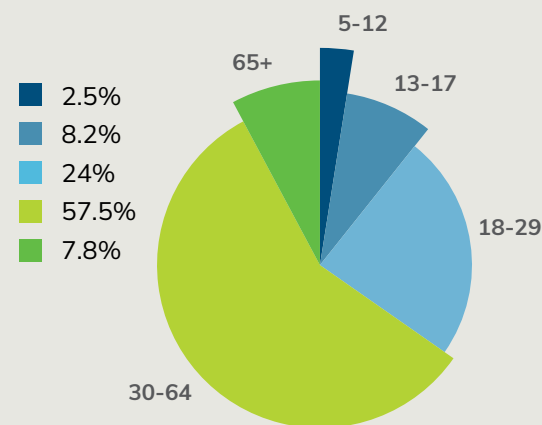
Alcohol and tobacco compliance checks conducted

**TREATMENT**

**Patient Makeup**



**Percentage of Ages of Patients Served**



**23** Patients received medication assisted treatment



Individuals received a clinical service



Scan the QR code to learn more.





The Greenwood-Edgefield-McCormick-Abbeville Commission on Alcohol and Drug Abuse (GEMACADA) dba Cornerstone was authorized by the SC General Assembly's Act 301 of 1973. Cornerstone is governed by a 12-member Board of Commissioners who are appointed by the county councils in the agency service area. Cornerstone is licensed by the SC Department of Public Health and gained national accreditation from Commission on Accreditation of Rehabilitation Facilities (CARF). Cornerstone is the only

four-county alcohol/drug authority in South Carolina. The agency provides prevention, treatment, and recovery services for individuals impacted by substance use disorders as well as problem gambling. Our professional staff includes credentialed prevention professionals, nationally certified addictions counselors, licensed social workers, and DOT Substance Abuse Professionals.

**OUR MISSION**

**TO REDUCE THE NEGATIVE HEALTH, SOCIAL AND ECONOMIC CONSEQUENCES RESULTING FROM THE USE AND ABUSE OF ALCOHOL AND OTHER DRUGS. THE AGENCY IS TO COORDINATE, SUPPORT AND DIRECT ALCOHOL AND OTHER DRUG ABUSE SERVICES WITHIN OUR FOUR COUNTIES SERVED.**

**Greenwood, Edgefield, McCormick, and Abbeville County Health Impact Data**



Population  
**129,851**  
Rural Population  
**60%**

Percentage of Population Uninsured  
**12%**

**Substance Use Trends**

Substance use among patients admitted

**72%**  
Alcohol

**20%**  
Tobacco

**54%**  
Marijuana

**19%**  
Methamphetamine

**24** Patients received medication assisted treatment



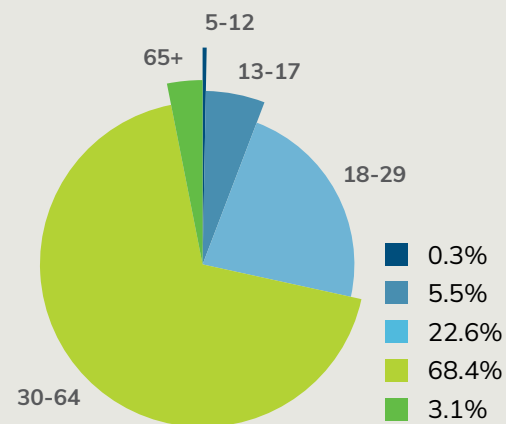
Individuals received a clinical service

**TREATMENT**

**Patient Makeup**

**35%**  
**65%**

**Percentage of Ages of Patients Served**



**OUTCOMES**

**98%**

Reported at post-discharge they felt good about their quality of their life.

**99%**

Reported they were satisfied with services they received.

**93%**

Reported at discharge their overall alcohol and substance use was reduced or in remission.

**PREVENTION**

**7%**

Alcohol compliance check violation rate (9 violations out of 126 compliance checks)

**395**

Boxes of Narcan distributed to the community

**59.1K**

Impressions of prevention social media campaign

**3,821**

Individuals attended prevention alternative events



Scan the QR code to learn more.





Counseling Services of Lancaster provides comprehensive prevention, intervention, treatment, and recovery services for individuals and families affected by substance use. We work closely with schools, law enforcement, healthcare partners, and community organizations to expand access to care, reduce overdoses, and support long-term recovery. Our agency is committed to delivering evidence-based services that strengthen the health and wellbeing of Lancaster County.

**OUR MISSION**

**TO PROVIDE COMPASSIONATE, EVIDENCE-BASED PREVENTION, INTERVENTION, TREATMENT, AND RECOVERY SERVICES THAT EMPOWER INDIVIDUALS AND FAMILIES AFFECTED BY SUBSTANCE USE AND STRENGTHEN THE HEALTH AND WELLBEING OF LANCASTER COUNTY.**

**Lancaster County Health Impact Data**



Population  
**108,215**  
Rural Population  
**38%**

Percentage of Population Uninsured  
**10%**

**Substance Use Trends**

Substance use among patients admitted

**48%**  
Alcohol

**56%**  
Marijuana

**29%**  
Opioids

**23%**  
Cocaine

**OUTCOMES**

**97%**

Reported at post-discharge they were able to handle their responsibilities.

**100%**

Reported they would recommend the services of our agency.

**100%**



Reported at post-discharge they felt good about their quality of their life.

**PREVENTION**

**309**

Students received prevention/early-intervention services with education and referrals

**1,012**

Boxes of Narcan distributed to the community

**210K**

Media impressions delivered by substance use prevention radio PSAs

**3,094**

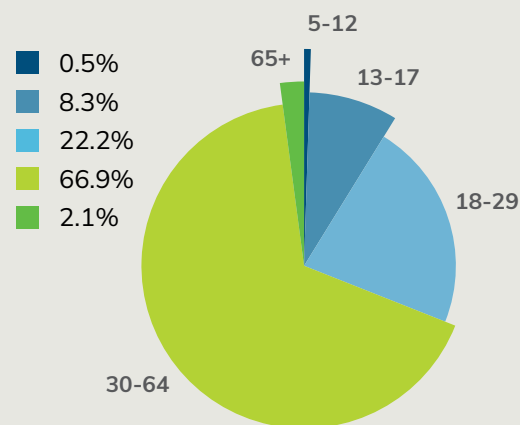
Safety resources distributed to families (locking medication bags/medication deactivation kits)

**TREATMENT**

**Patient Makeup**

**42%**  
**58%**

**Percentage of Ages of Patients Served**



**122**

Patients received medication assisted treatment



**623** Individuals received a clinical service



Scan the QR code to learn more.





The Dorchester Alcohol and Drug Commission (DADC), located in Summerville, SC, has served Dorchester County for decades as the public treatment and prevention agency. DADC offers a full continuum of care, including outpatient and intensive outpatient counseling, recovery support, and integrated treatment for co-occurring mental health concerns. Services are evidence-based, compassionate, and individualized, with options such as Medication Assisted Treatment (MAT) to manage cravings and withdrawal.

Prevention and community partnerships are central, with staff working in schools, coalitions, and public events to reduce risk factors and build resilience. Accredited by CARF, DADC is committed to quality care, long-term recovery, and empowering individuals and families to reclaim stability, dignity, and hope.

**OUR MISSION**

**TO ACHIEVE A HEALTHY RESILIENT COMMUNITY WITH ACCESS TO MENTAL HEALTH AND SUBSTANCE MISUSE PREVENTION, TREATMENT, AND RECOVERY RESOURCES.**

**Dorchester County Health Impact Data**



Population  
**169,833**  
Rural Population  
**15%**

Percentage of Population Uninsured  
**10%**

**Substance Use Trends**

Substance use among patients admitted

**50%**  
Alcohol

**15%**  
Tobacco

**55%**  
Marijuana

**12%**  
Cocaine

**89** Patients received medication assisted treatment

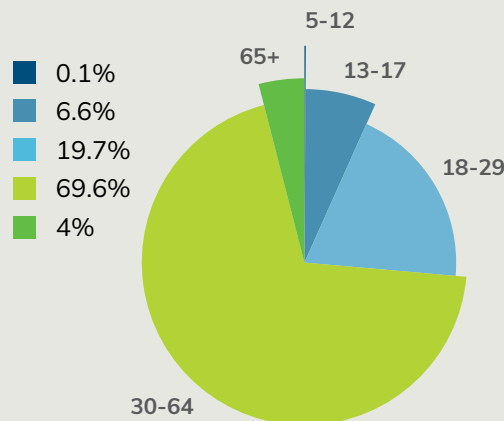
**2,732** Individuals received a clinical service

**TREATMENT**

**Patient Makeup**

**31%**  
**69%**

**Percentage of Ages of Patients Served**



**OUTCOMES**

**100%**

Reported at post-discharge their life was manageable.

**95%**

Reported at assessment update they understood the issues that led them into services.

**80%**

Reported at post-discharge their overall alcohol and substance use was reduced or in remission.

**PREVENTION**

**2,500**

Students reached during Red Ribbon Week

**1,180**

Boxes of Narcan distributed to the community

**1.75M**

Media messages delivered through prevention billboards, DMV ads, broadcasts, podcasts and print

**500**

Individuals reached through community awareness events



Scan the QR code to learn more.



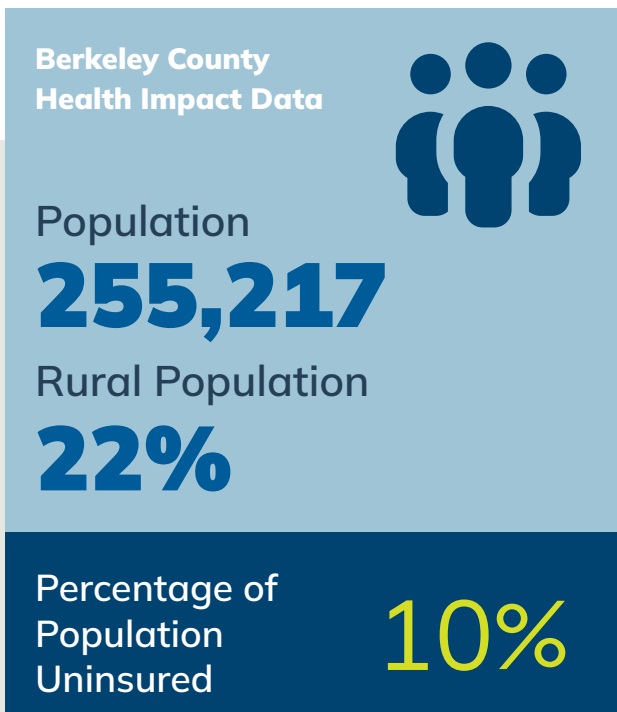


Behavioral health services provided by the Ernest E. Kennedy Center are available to individuals suffering from a substance use disorder, addiction, or any problems associated with substance use. The center has a team of caring, compassionate, and dedicated professionals specializing in addiction treatment and education. The services provided by Ernest E. Kennedy Center are informed by current science and research for best practices related to the prevention and treatment of substance use disorders.

These services include Biopsychosocial Assessment, Treatment Planning, Psychoeducation topics, Individual, Family, and Group Counseling. These services are provided in an outpatient setting which may also include Intensive Outpatient treatment groups. A counselor will begin with screening and an assessment to identify your specific needs and recommendations for which service(s) may benefit you. Prevention provides services, programs and events that encourage and promote healthy behaviors and lifestyles.

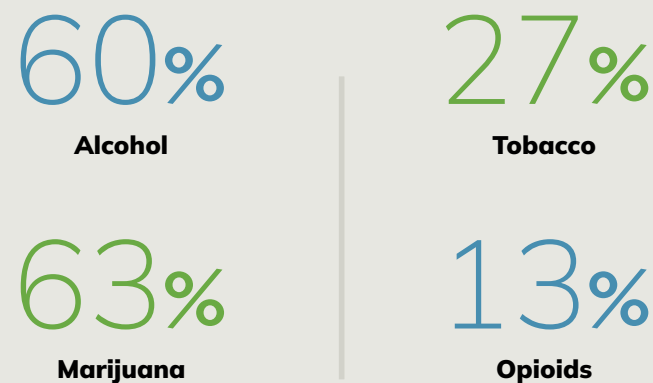
**OUR MISSION**

**TO PROVIDE COMPREHENSIVE BEHAVIORAL HEALTH SERVICES THAT PROMOTE HEALTH AND IMPROVE QUALITY OF LIFE.**



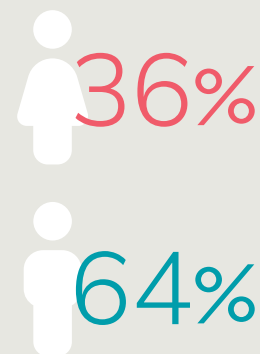
**Substance Use Trends**

Substance use among patients admitted

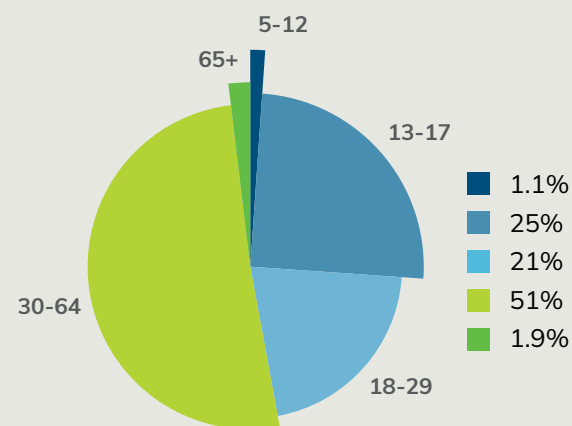


**TREATMENT**

**Patient Makeup**



**Percentage of Ages of Patients Served**



**213** Patients received medication assisted treatment

**1,156** Individuals received a clinical service

**OUTCOMES**

**98%**

Reported at discharge they understood the issues that led them into services.

**98%**

Reported they would recommend the services of our agency.



Reported at post-discharge their overall alcohol and substance use was reduced or in remission.

**PREVENTION**

**12.9K+** Individuals reached through informational resources and initiatives, health fairs, and speaking engagements

**1,216** Boxes of Narcan distributed to the community

**277** 7th-8th graders received Life Skills substance use education

**96.2%** Compliant rate from underage alcohol sales compliance checks



Scan the QR code to learn more.



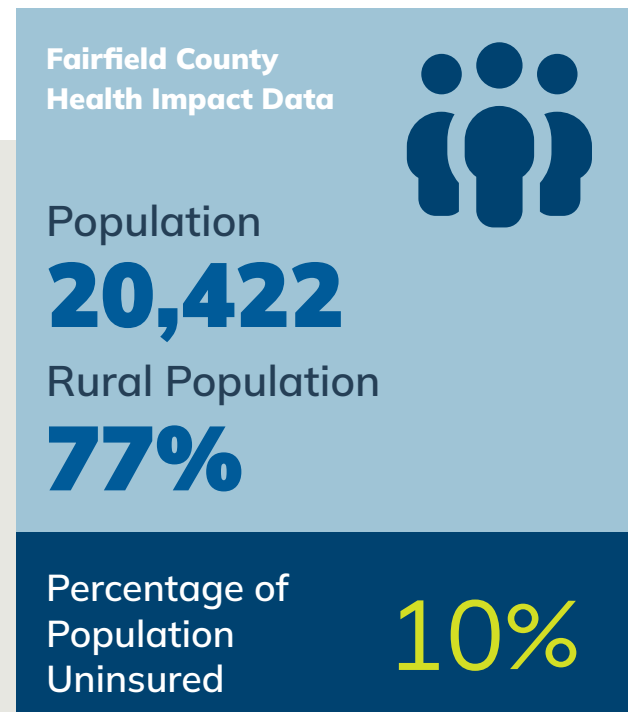


Fairfield Behavioral Health Services (FairfieldBHS) is a non-profit outpatient facility serving youth, adults, families, and communities affected by substance use for over 50 years. FairfieldBHS provides accessible, confidential, and affordable prevention, intervention, and treatment services. Prevention uses community needs assessments to identify risk and protective factors. Treatment includes thorough assessments to determine appropriate level of care, with priority for pregnant women and IV drug users, using

educational, behavioral, cognitive, and medical therapies. As the county substance use authority, FairfieldBHS provides evidence-based school/community programs, opioid response efforts, clinical assessments, counseling, Medications for Opioid/Alcohol Use Disorders, employee programs, drug testing, peer support, and Adult Drug Court.

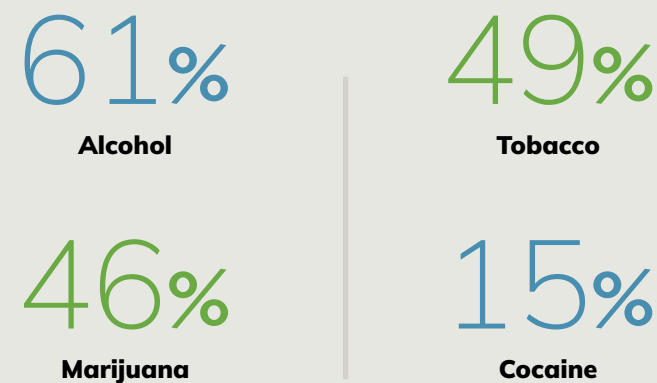
**OUR MISSION**

IMPROVING THE QUALITY OF LIFE FOR ALL YOUTH, ADULTS, FAMILIES, AND COMMUNITIES IMPACTED BY SUBSTANCE USE.



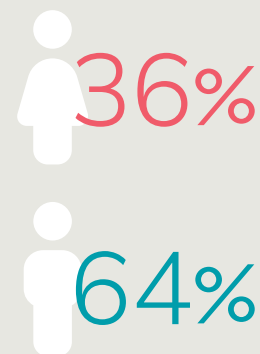
**Substance Use Trends**

Substance use among patients admitted

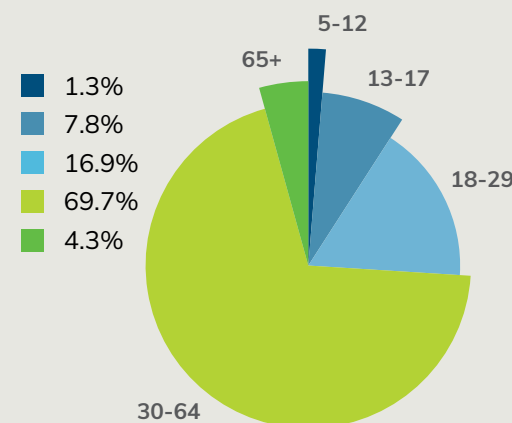


**TREATMENT**

**Patient Makeup**



**Percentage of Ages of Patients Served**



**24** Patients received medication assisted treatment



Individuals received a clinical service

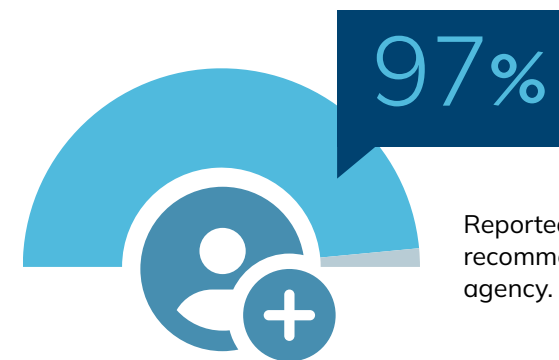
**OUTCOMES**

**97%**

Reported at post-discharge they felt good about their quality of their life.

**100%**

Reported at discharge they were stably housed.



Reported they would recommend the services of our agency.

**PREVENTION**

**468**

Youths who participated in prevention evidence based programs

**175**

Boxes of Narcan distributed to the community

**196.5K+**

Impressions of media awareness messages

**1,521**

Total youths and adults served in prevention services



Scan the QR code to learn more.





GateWay Counseling Center seeks to offer services that reduce the negative impacts of substance use in our community. GateWay Counseling Center acknowledges that substance use related problems affect all levels of our society. It affects families, schools, employers, law enforcement, the healthcare system, and many others. We offer evidence-based treatment interventions and other services to assist individuals with substance use disorders regain control in their lives. We assist individuals with

education and facts to reduce their risk of experiencing substance use related problems. We also support individuals with substance use disorders by equipping them with the necessary skills to begin recovery and address the challenges resulting from their substance use. We provide person-centered, effective, efficient, and affordable care to our community.

**OUR MISSION**

THROUGH A VARIETY OF PRIMARY PREVENTION, INTERVENTION AND TREATMENT STRATEGIES, GATEWAY WORKS WITH NUMEROUS OTHER LOCAL AND STATE AGENCIES AND ORGANIZATIONS IN AN ATTEMPT TO REDUCE AND CONTROL PROBLEMS RELATED TO THOSE ABUSING OR AT RISK OF ABUSING ALCOHOL AND OTHER DRUGS.

Laurens County Health Impact Data

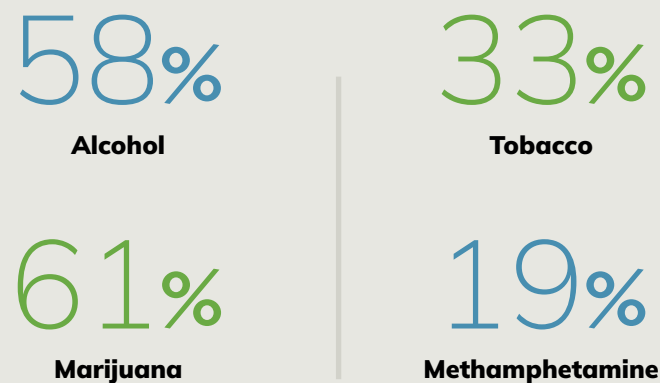


Population **68,873**  
Rural Population **64%**

Percentage of Population Uninsured **13%**

Substance Use Trends

Substance use among patients admitted



OUTCOMES

96%

Reported they were satisfied with services they received.

96%

Reported they would recommend the services of our agency.

95%

Reported at post-discharge their overall alcohol and substance use was reduced or in remission.

PREVENTION

275



Middle school students were presented substance use prevention curriculums

526



Boxes of Narcan distributed to the community

15K



Individuals reached by prevention efforts (health fairs, online and print media, speeches)

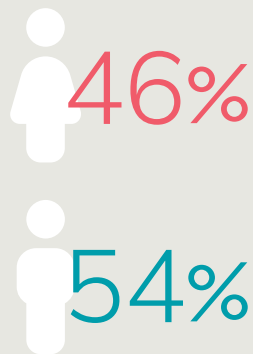
65



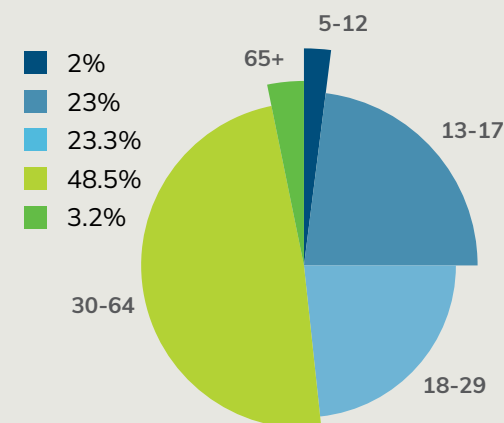
Speaking engagements (schools, churches, civic groups, employers, general public)

TREATMENT

Patient Makeup



Percentage of Ages of Patients Served



43 Patients received medication assisted treatment

664 Individuals received a clinical service



Scan the QR code to learn more.





The Georgetown County Alcohol and Drug Abuse Commission (GCADAC) is located in the historic city of Georgetown, South Carolina. GCADAC is the designated county authority on substance misuse and abuse and goes through the process of state licensing in addition to state and national accreditation to ensure we can provide high quality services to the community.

GCADAC is committed to the following core values:

- Decreasing the negative effects of alcohol and other drug abuse/ dependence.
- Treating each client with dignity and respect.
- Upholding the rights of each client to self-determination and absolute confidentiality.
- Providing all services in a caring and non-judgmental manner.

**OUR MISSION**

**TO REDUCE THE NEGATIVE HEALTH, SOCIAL, AND ECONOMIC CONSEQUENCES RESULTING FROM THE USE OF ALCOHOL AND OTHER DRUGS USING PRIMARY PREVENTION, INTERVENTION, AND TREATMENT STRATEGIES: IN COLLABORATION WITH STATE AND LOCAL ORGANIZATIONS.**

**Georgetown County Health Impact Data**

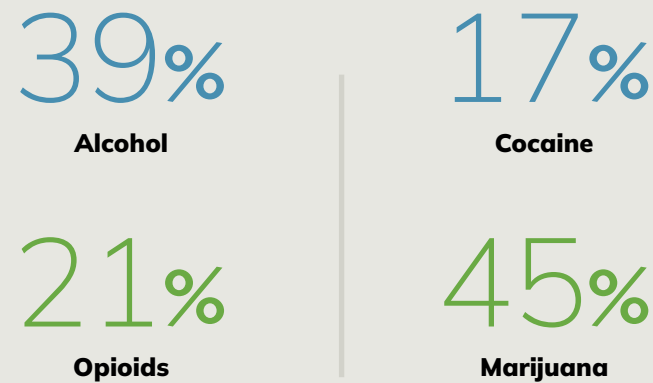


Population **65,731**  
Rural Population **42%**

Percentage of Population Uninsured **12%**

**Substance Use Trends**

Substance use among patients admitted



**OUTCOMES**

**100%**

Reported at post-discharge they understood the issues that led them into services.

**96%**

Reported at discharge they were able to handle crisis situations.

**88%**

Reported at post-discharge their overall alcohol and substance use was reduced or in remission.

**PREVENTION**

**457**

Underage individuals received education or awareness information

**259**

Boxes of Narcan distributed to the community

**214**

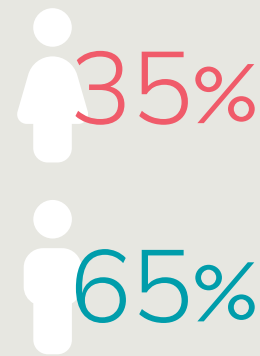
Alcohol and Tobacco compliance checks conducted in the county

**15**

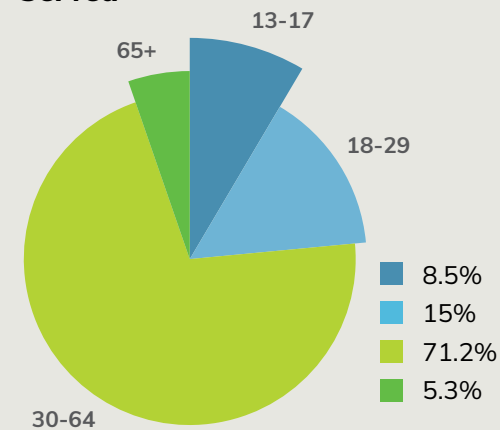
Fake ID checks involving 190 youths

**TREATMENT**

**Patient Makeup**



**Percentage of Ages of Patients Served**



**82** Patients received medication assisted treatment



Individuals received a clinical service

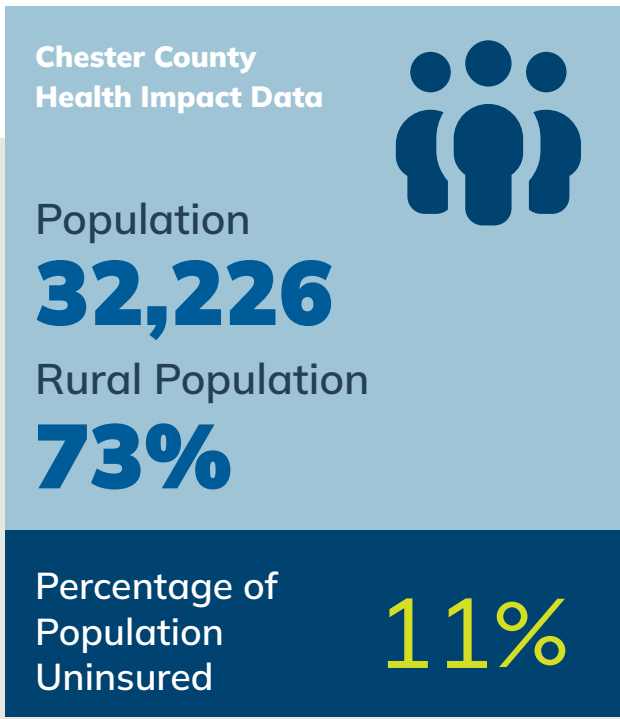


Scan the QR code to learn more.



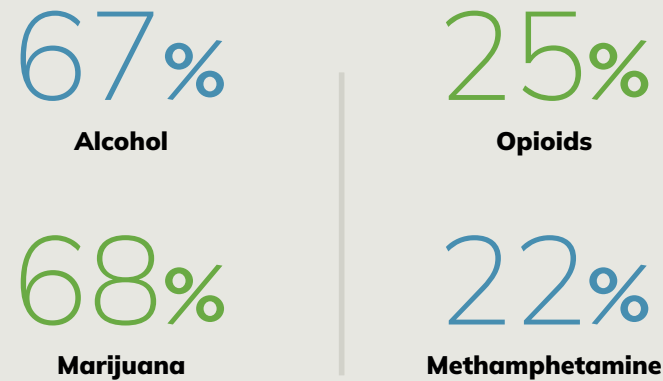


Hazel Pittman Center (HPC) is Chester County's designated substance use authority, providing evidence-based prevention, education, and outpatient treatment. HPC offers individualized, research-supported interventions addressing the biological, psychological, and social aspects of substance use disorders. Services engage individuals and families, strengthen protective factors, reduce risk, and support long-term recovery through strong community partnerships.



**Substance Use Trends**

Substance use among patients admitted

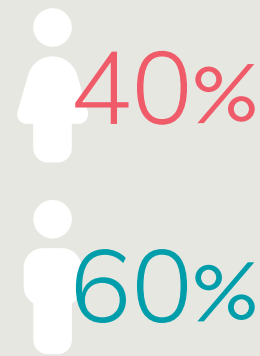


**OUR MISSION**

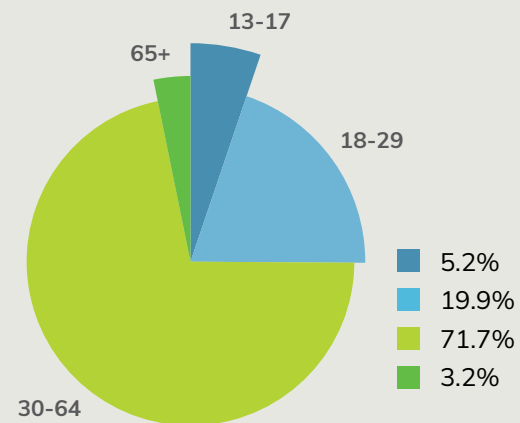
TO IMPROVE THE QUALITY OF LIFE IN CHESTER COUNTY AND THE SURROUNDING AREA BY PROMOTING BEHAVIORAL HEALTH WELLNESS AND MEETING THE NEEDS OF INDIVIDUALS WITH SUBSTANCE USE DISORDERS.

**TREATMENT**

**Patient Makeup**



**Percentage of Ages of Patients Served**



Individuals received a clinical service

**OUTCOMES**



Reported at discharge they felt good about their quality of their life.

Reported they were satisfied with services they received.



Reported at discharge their overall alcohol and substance use was reduced or in remission.

**PREVENTION**



6th-12th graders received substance use prevention education



Boxes of Narcan distributed to the community



Media impressions delivered by prevention messaging. (digital, print, outdoor, and broadcast)



Individuals reached by prevention speaking engagements, health fairs, and online events



Scan the QR code to learn more.





Healthy U Behavioral Health Services is a substance abuse outpatient therapy facility located in Union, SC. We are dedicated to providing compassionate, confidential, and accessible care to individuals seeking support. Our mission is to meet people where they are and guide them toward recovery with personalized treatment, encouragement, and respect. We want our community to know that we are here for them—ready to listen, ready to help, and committed to walking alongside them on their journey to healing.

**OUR MISSION**

**TO BE THE MOST EFFECTIVE PREVENTION, INTERVENTION AND TREATMENT SERVICE PROVIDER IN UNION COUNTY, ALLOWING EVERY CITIZEN OF UNION COUNTY TO LIVE UP TO HIS OR HER MAXIMUM POTENTIAL WITHOUT BEING HINDERED BY THE NEGATIVE CONSEQUENCES OF ALCOHOL, TOBACCO AND OTHER DRUGS.**

**Union County Health Impact Data**



Population **26,629**  
Rural Population **64%**

Percentage of Population Uninsured **11%**

**Substance Use Trends**

Substance use among patients admitted

**24%**  
Alcohol

**13%**  
Opioids

**65%**  
Marijuana

**21%**  
Methamphetamine

**4** Patients received medication assisted treatment



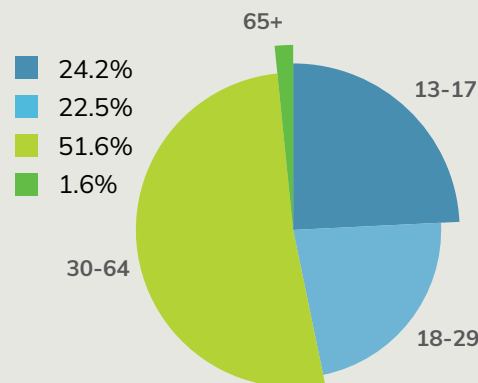
**306** Individuals received a clinical service

**TREATMENT**

**Patient Makeup**

**24%**  
**76%**

**Percentage of Ages of Patients Served**



**OUTCOMES**

**93%**

Reported at discharge they felt good about their quality of their life.

**98%**

Reported at discharge they understood the issues that led them into services.

**95%**

Reported at discharge their life was manageable.

**PREVENTION**

**300**

Individuals reached by prevention brochures at Empowerment Day Community Event

**75**

Boxes of Narcan distributed to the community

**252K**

Media impressions delivered through prevention billboards

**80K**

Media impressions delivered through prevention education radio ads



Scan the QR code to learn more.



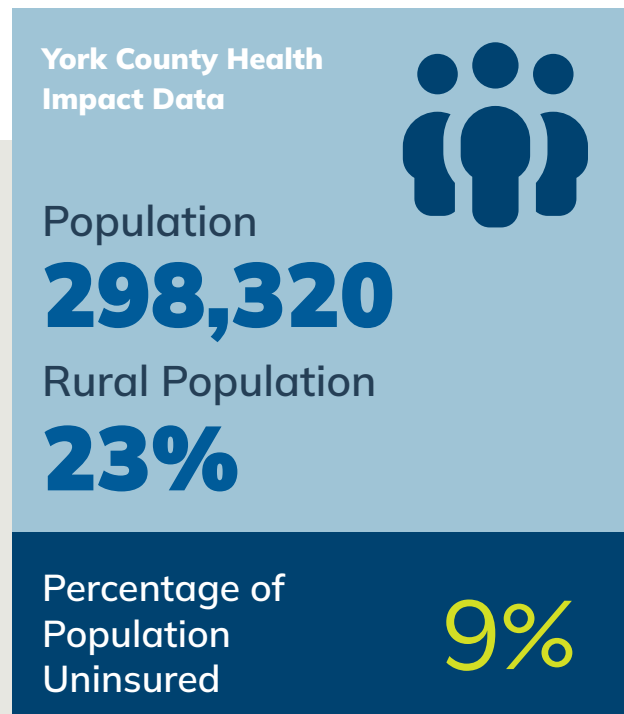


Keystone is York County's authority for substance misuse prevention, intervention, treatment & recovery services. Through school-based & community-based prevention efforts, Keystone works to equip individuals & families to live a healthy lifestyle by educating them about the risks of substance use. Keystone's treatment team uses evidence-based, trauma-informed practices to assist those with Substance Use Disorders (SUD) across a continuum of care, including Screening & Assessment, Traditional & Intensive

Outpatient, Withdrawal Management, Medication Assisted Treatment, Recovery Management & Residential services. One's ability to pay will not prevent access to Keystone's services. Keystone has proudly shared hope & healing since 1969.

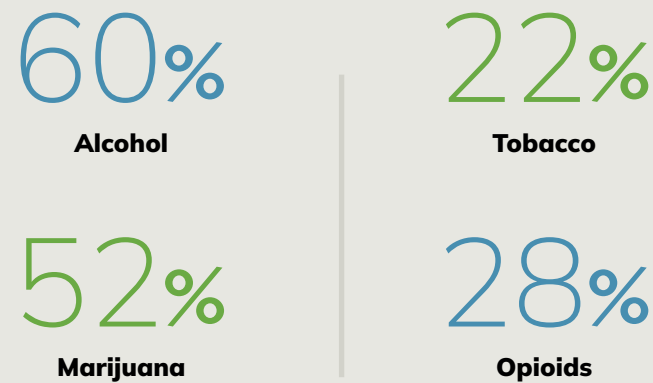
**OUR MISSION**

TO IMPROVE THE QUALITY OF LIFE FOR INDIVIDUALS AND FAMILIES BY EDUCATING, TREATING, AND PROVIDING SUPPORT FOR THOSE IMPACTED BY SUBSTANCE USE.



**Substance Use Trends**

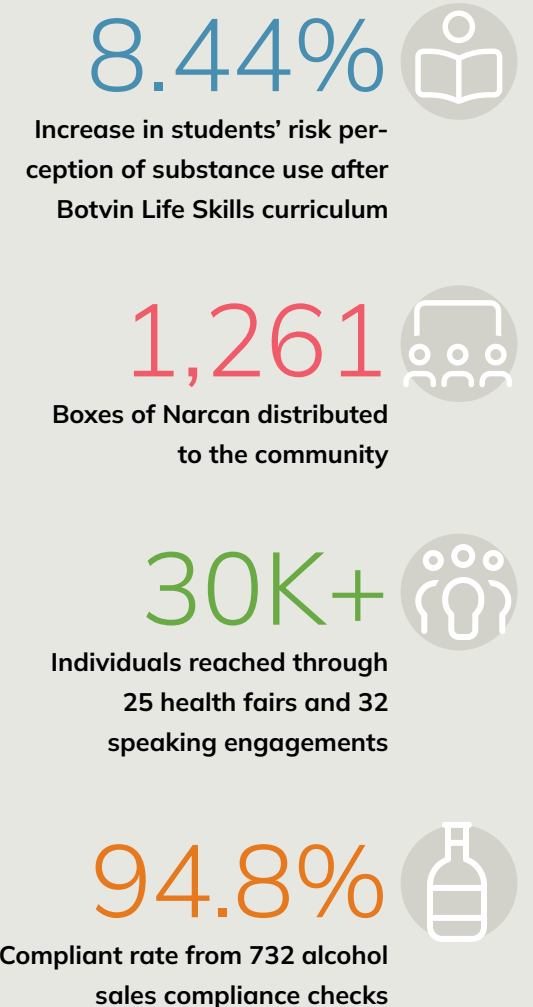
Substance use among patients admitted



**OUTCOMES**

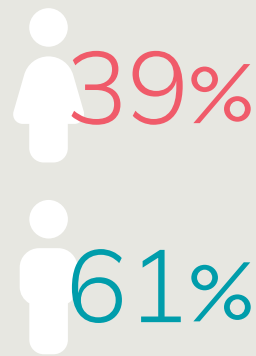


**PREVENTION**

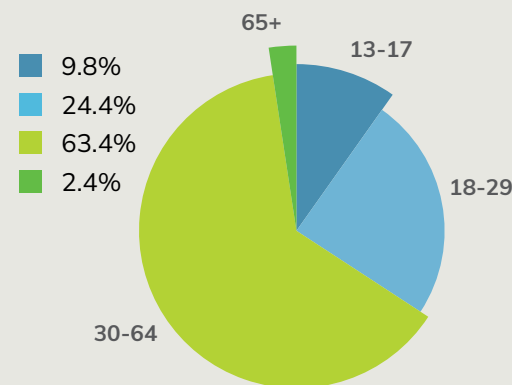


**TREATMENT**

**Patient Makeup**



**Percentage of Ages of Patients Served**



201 Patients received medication assisted treatment

1,567 Individuals received a clinical service



Scan the QR code to learn more.





LRADAC is a purpose-driven, community-centered agency dedicated to building pathways to recovery from substance misuse for individuals, families, and the broader community in Lexington and Richland Counties. Through compassionate prevention, intervention, residential and outpatient treatment, medical detox, youth and family support, and medication-assisted recovery, LRADAC meets people where they are and supports them through every step of healing. Guided by integrity, teamwork, and respect, LRADAC

annually serves over 5,000 individuals—restoring lives, strengthening families, and building healthier communities.

**OUR MISSION**

**LRADAC CREATES AND SUPPORTS PATHWAYS FOR PREVENTION AND RECOVERY FROM SUBSTANCE MISUSE FOR INDIVIDUALS, FAMILIES AND COMMUNITIES.**

**Lexington & Richland County Health Impact Data**

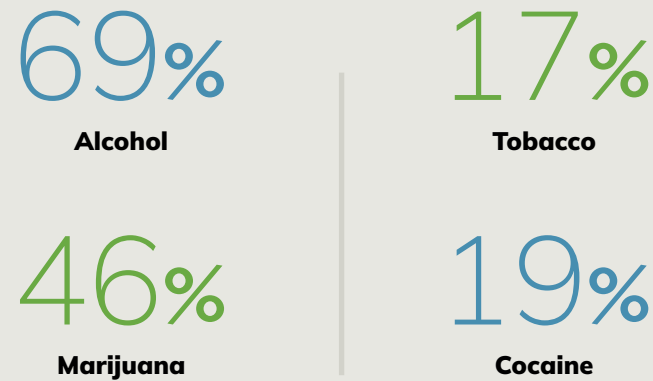


Population **739,999**  
Rural Population **15%**

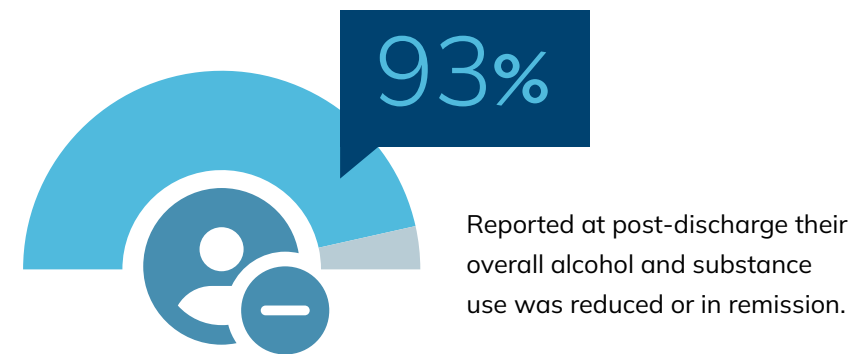
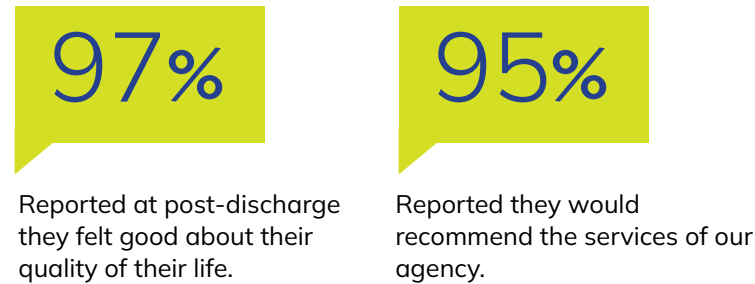
Percentage of Population Uninsured **10%**

**Substance Use Trends**

Substance use among patients admitted



**OUTCOMES**



**PREVENTION**

**25.3K+** Individuals reached through prevention outreach activities

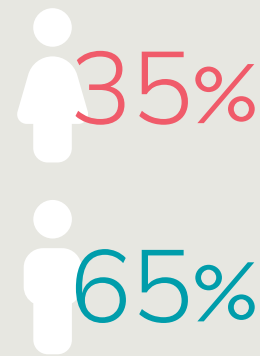
**740** Boxes of Narcan distributed to the community

**32M+** Impressions of media-based prevention strategies

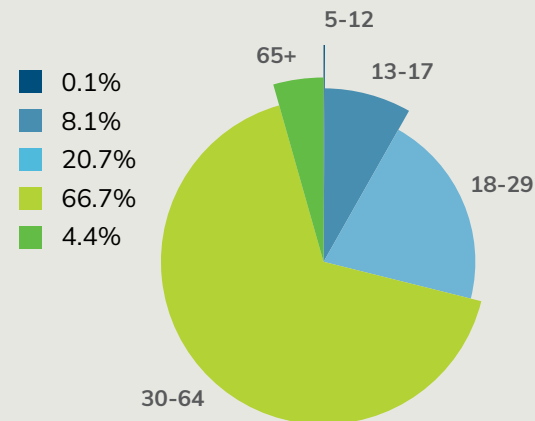
**100%** Reduction in 30-day tobacco (vaping/e-cigarette) use by LifeSkills program participants

**TREATMENT**

**Patient Makeup**



**Percentage of Ages of Patients Served**



**222** Patients received medication assisted treatment

**4,021** Individuals received a clinical service



Scan the QR code to learn more.



# New Life Center

Commission on Alcohol and Other Drug Abuse


The New Life Center is a nonprofit outpatient substance abuse facility serving Allendale, Hampton, and Jasper counties. As the county authority for substance use services, we provide comprehensive, evidence-based treatment, prevention, and intervention programs. We believe substance use disorders are treatable and approach every individual with compassion, dignity, and respect. Services include outpatient care, ADSAP for DUI/BUI offenders, and MAT for opioid and alcohol use disorders. We

collaborate with community partners, first responders, and law enforcement to reduce overdoses, provide prevention education, and distribute Narcan to help save lives.

## OUR MISSION

TO PROVIDE EDUCATION AND COUNSELING SERVICES TO THE CITIZENS OF HAMPTON, ALLENDALE, AND JASPER COUNTIES THROUGH THE USE OF AFFORDABLE AND EVIDENCE-BASED PROGRAMS AND PRACTICES.

Allendale, Hampton & Jasper County Health Impact Data



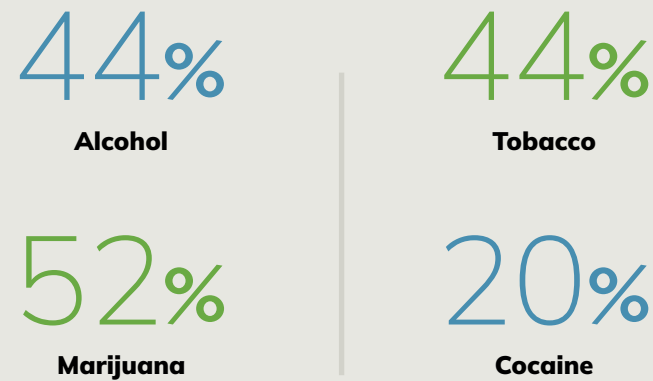
Population **58,723**

Rural Population **89%**

Percentage of Population Uninsured **15%**

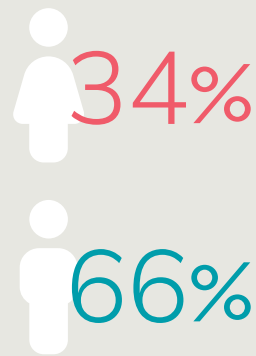
### Substance Use Trends

Substance use among patients admitted

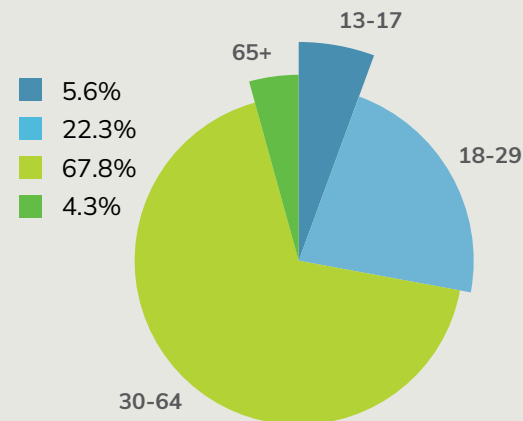


### TREATMENT

#### Patient Makeup



#### Percentage of Ages of Patients Served



**31** Patients received medication assisted treatment

**376** Individuals received a clinical service



### OUTCOMES

**100%**

Reported at post-discharge they felt good about their quality of their life.

**94%**

Reported they were satisfied with services they received.


**94%**

Reported at discharge their overall alcohol and substance use was reduced or in remission.

### PREVENTION


**13.9K+**

Individuals reached through education/awareness presentations and events




**1,053**

Boxes of Narcan distributed to the community




**12.3K+**

Individuals reached by media awareness messages (alcohol, opioids, tobacco/vaping, marijuana)



**1,575**

Individuals participated in alternative events




Scan the QR code to learn more.





Nexus Care of Beaufort County connects people to hope, healing, and recovery. As the county's alcohol and drug authority, Nexus Care of Beaufort County strives to build a healthy, thriving community free from substance misuse. We offer a full continuum of care—from youth prevention and overdose prevention to outpatient and intensive outpatient treatment, DUI services (ADSAP), and recovery support. Our CARE Team—certified addiction counselors and peer

support specialists—connects individuals to vital resources through personalized case management, treatment, and recovery support. Financial assistance is available for those who qualify.

**OUR MISSION**

**TO REDUCE THE NEGATIVE IMPACT OF ALCOHOL AND DRUGS IN BEAUFORT COUNTY BY PROVIDING ITS CITIZENS WITH PERSON-CENTERED PREVENTION, INTERVENTION, TREATMENT, AND RECOVERY SERVICES.**

**Beaufort County Health Impact Data**



Population **198,979**  
Rural Population **19%**

Percentage of Population Uninsured **11%**

**Substance Use Trends**

Substance use among patients admitted

**68%**  
Alcohol

**20%**  
Tobacco

**50%**  
Marijuana

**12%**  
Cocaine

**16** Patients received medication assisted treatment



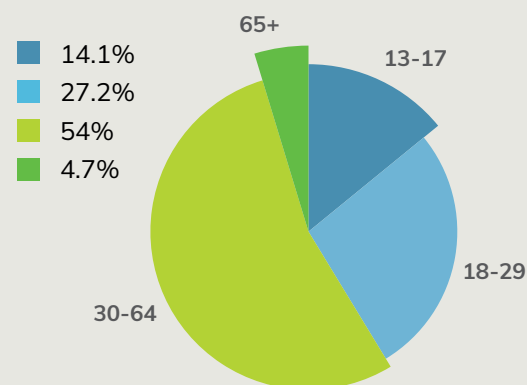
**891** Individuals received a clinical service

**TREATMENT**

**Patient Makeup**

**31%**  
**69%**

**Percentage of Ages of Patients Served**



**OUTCOMES**

**99%**

Reported at discharge they felt good about their quality of their life.

**99%**

Reported at discharge they were able to handle crisis situations.



Reported at discharge their overall alcohol and substance use was reduced or in remission.

**PREVENTION**

**32**

Outreach events conducted (general community, faith groups, senior centers)

**1,038**

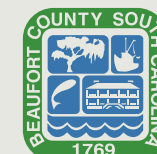
Boxes of Narcan distributed to the community

**453**

Individuals trained on proper drug disposal, Good Samaritan laws, and overdose response

**5,082**

Individuals reached by speaking engagements on substance use prevention



Scan the QR code to learn more.

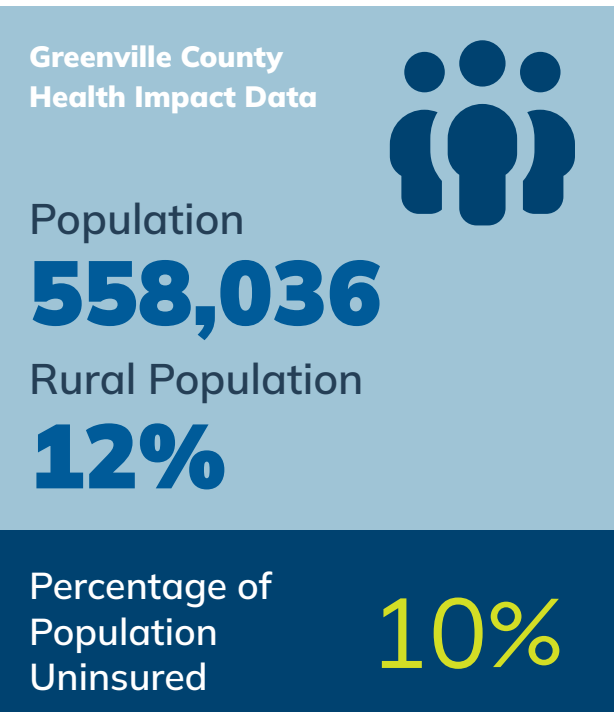


At the Phoenix Center, confidential and effective client care is always our first priority. With over 50 years of experience, we have been caring for the citizens of Greenville County through quality prevention, intervention, and treatment services. The Phoenix Center is a non-profit agency. Legislated as the authority on substance abuse in Greenville County by South Carolina Act 301, the Phoenix Center is the county's largest provider of substance abuse services. With a dedicated staff and innovative programs, the

Phoenix Center takes a proactive approach to preventing and treating substance use disorders. Because we believe that substance use disorders are both preventable and treatable, we offer an extensive range of services to meet the ever-changing needs of our community. Women who are pregnant, intravenous drug users will be given priority for admission to all programs.

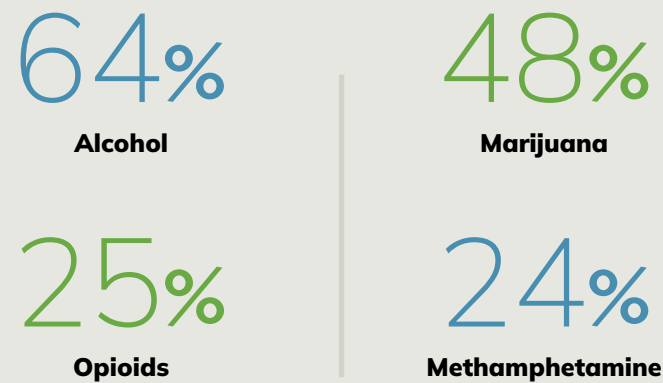
**OUR MISSION**

SERVING AND LOVING OUR COMMUNITY BY NURTURING SAFETY, DEVELOPING TRUST, OFFERING CHOICES, ENGAGING PARTNERS, AND EMPOWERING FAMILIES.



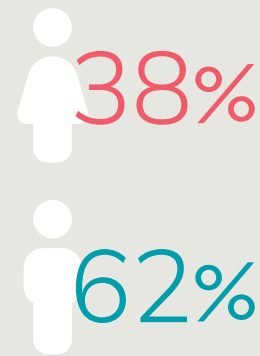
**Substance Use Trends**

Substance use among patients admitted

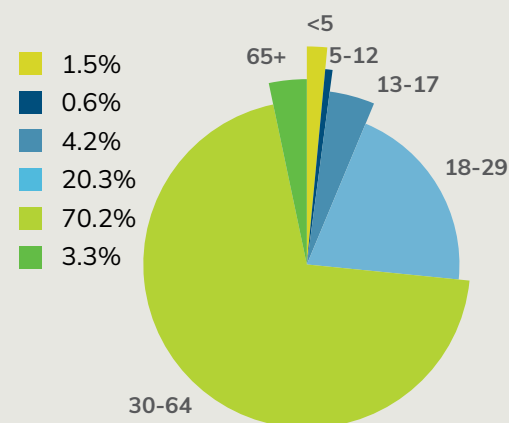


**TREATMENT**

**Patient Makeup**



**Percentage of Ages of Patients Served**



**283** Patients received medication assisted treatment

**4,731** Individuals received a clinical service

**OUTCOMES**

**95%**

Reported at post-discharge they felt good about their quality of their life.

**88%**

Reported at post-discharge they were able to handle crisis situations.

**92%**

Reported at post-discharge their overall alcohol and substance use was reduced or in remission.

**PREVENTION**

**55%**

Increase in students' risk perception after multi-session prevention program

**1,547**

Boxes of Narcan distributed to the community

**18K+**

Individuals received prevention information face-to-face

**755**

Alcohol and tobacco compliance checks conducted



Scan the QR code to learn more.





Colleton County Alcohol and Drug Abuse, "dba" Pillars4Hope, has served individuals in our community for over 45 years, providing prevention, intervention, treatment, and MAT services. As the county's local authority on substance use disorders, we offer accessible, evidence-based services that support individuals and families throughout recovery. Our SUD programs promote healing, resilience, and long-term recovery. Through strong

partnerships and client-centered services, we remain committed to helping our community thrive because we believe "change is possible."

**OUR MISSION**

**TO DELIVER A BROAD SPECTRUM OF BEHAVIORAL HEALTH SERVICES ASSOCIATED WITH SUBSTANCE USE DISORDERS AND TO PROMOTE DURABLE AND LASTING TREATMENT AND RECOVERY FOR ALL INDIVIDUALS WHO HOPE TO REDUCE THE NEGATIVE IMPACTS ASSOCIATED WITH SUBSTANCE USE DISORDERS.**

**Colleton County Health Impact Data**



Population  
**38,874**  
Rural Population  
**76%**

Percentage of Population Uninsured  
**13%**

**Substance Use Trends**

Substance use among patients admitted

**60%**  
Alcohol

**35%**  
Tobacco

**62%**  
Marijuana

**27%**  
Methamphetamine

**OUTCOMES**

**99%**

Reported at discharge they felt good about their quality of their life.

**100%**

Reported at discharge they understood the issues that led them into services.

**82%**

Reported at discharge their overall alcohol and substance use was reduced or in remission.

**PREVENTION**

**3,500**

Preschool, elementary, middle and high school students reached through events

**390**

Boxes of Narcan distributed to the community

**100K**

Media impressions delivered through campaigns, billboards and social media

**6,200**

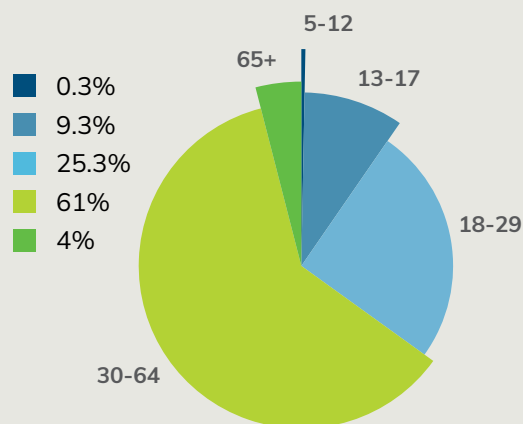
Individuals reached by 12 health fairs and events to reduce underage tobacco use

**TREATMENT**

**Patient Makeup**

**39%**  
**61%**

**Percentage of Ages of Patients Served**



**32** Patients received medication assisted treatment

**300** Individuals received a clinical service



Scan the QR code to learn more.





Rubicon Family Counseling Center provides compassionate, evidence-based care for individuals and families facing substance use and mental health challenges. We meet people where they are and offer assessments, counseling, relapse-prevention support, adolescent services, peer support, and resource coordination. Our team focuses on dignity, connection, and practical help so recovery feels possible. We remain committed to hope, healing, and accessible support for our community.

Darlington County Health Impact Data

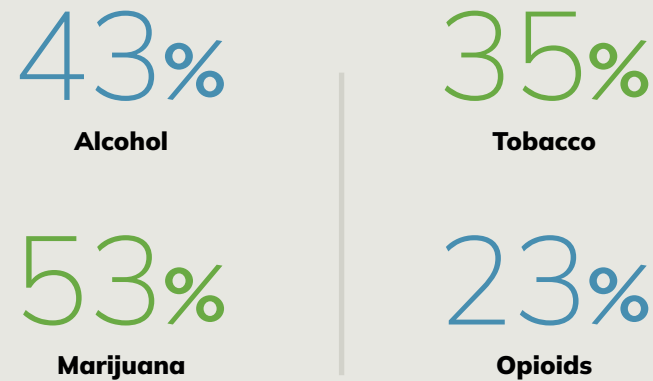


Population  
**62,416**  
Rural Population  
**57%**

Percentage of Population Uninsured  
**11%**

Substance Use Trends

Substance use among patients admitted



OUR MISSION

TO RESPOND SELECTIVELY TO IDENTIFIED HUMAN SERVICE NEEDS IN DARLINGTON COUNTY THROUGH PREVENTION, INTERVENTION AND TREATMENT STRATEGIES AIMED AT STRENGTHENING, ENHANCING AND MAINTAINING EFFECTIVE FUNCTIONING OF FAMILIES AND INDIVIDUALS, AND GENERALLY IMPROVE THE HEALTH STATUS OF COMMUNITY RESIDENTS.

OUTCOMES

96%

Reported they were satisfied with services they received.

96%

Reported they would recommend the services of our agency.

90%

Reported at post-discharge their overall alcohol and substance use was reduced or in remission.

PREVENTION

200

Students received substance use prevention materials at four back-to-school alternative events

1,152

Boxes of Narcan distributed to the community

2M

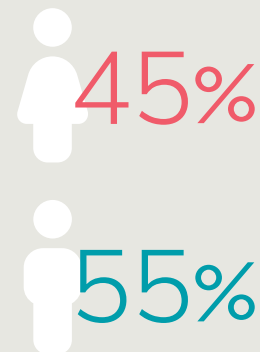
Media impressions delivered through billboards, radio and campaigns

153

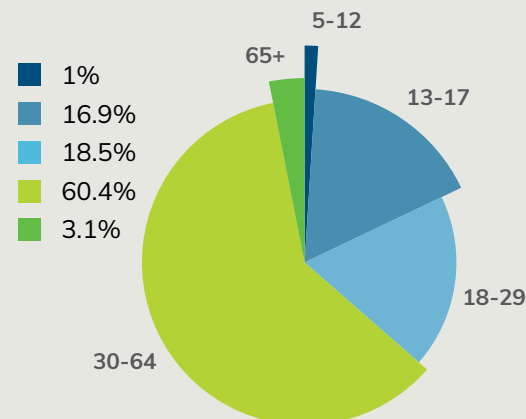
3rd-8th grade students received substance use prevention education

TREATMENT

Patient Makeup



Percentage of Ages of Patients Served



122

Patients received medication assisted treatment



573 Individuals received a clinical service



Scan the QR code to learn more.





Shoreline Behavioral Health Services, guided by its mission of “Changing Lives, Building Hope,” provides evidence-based treatment and prevention services for substance use disorders in Horry County. Programs include Intensive Outpatient, Level I outpatient counseling, aftercare, assessments, case management, crisis support, ADSAP, peer recovery, MAT when appropriate, and therapies like CBT and Motivational Interviewing. Prevention efforts focus

on schools, youth leadership, and community education to reduce risks and support healthier lives.

**OUR MISSION**

**TO ADDRESS THE PROBLEM OF ALCOHOL AND SUBSTANCE USE DISORDERS IN HORRY COUNTY BY PROVIDING INDIVIDUALIZED, RECOVERY-BASED TREATMENT AND COMMUNITY PREVENTION SERVICES.**

**Horry County Health Impact Data**

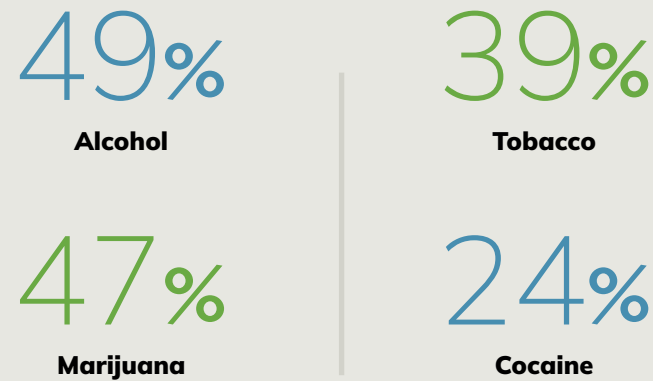
Population **397,478**

Rural Population **24%**

Percentage of Population Uninsured **15%**

**Substance Use Trends**

Substance use among patients admitted



**OUTCOMES**

**100%**

Reported at discharge they felt good about their quality of their life.

**100%**

Reported at discharge they understood the issues that led them into services.

**99%**

Reported at post-discharge their overall alcohol and substance use was reduced or in remission.

**PREVENTION**

**750**

Youths reached through prevention messaging campaign (Sticker Shock)

**818**

Boxes of Narcan distributed to the community

**1.3M+**

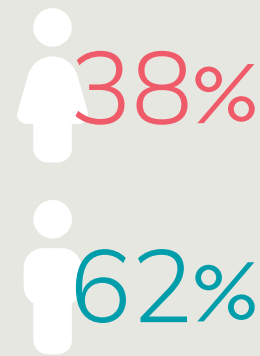
Media impressions delivered through prevention billboard campaign

**160**

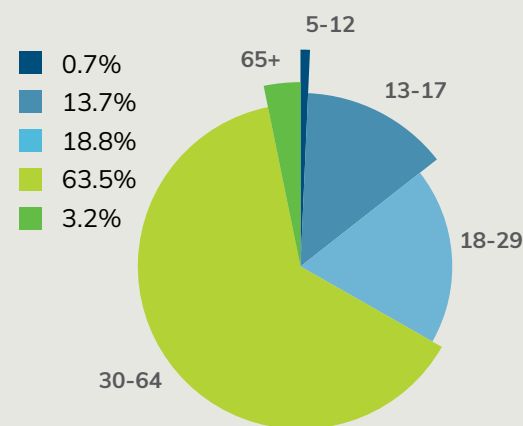
Alcohol and tobacco compliance checks conducted

**TREATMENT**

**Patient Makeup**



**Percentage of Ages of Patients Served**



**718**

Patients received medication assisted treatment

**2,956**

Individuals received a clinical service



Scan the QR code to learn more.





## BEHAVIORAL HEALTH SERVICES

Sumter Behavioral Health Services (SBHS) has served as Sumter County's designated alcohol and drug abuse authority since 1973, helping residents build healthier lives through prevention, intervention, treatment, and recovery services. SBHS provides outpatient and intensive outpatient care, Medication-Assisted Treatment, behavioral health counseling, case management, ADSAP, and evidence-based programs. Reaching schools, the detention

center, workplaces, and residents through telehealth, SBHS delivers compassionate, person-centered care that strengthens the well-being of Sumter County.

### OUR MISSION

**EMPOWERING PEOPLE IN SUMTER COUNTY TO LIVE FREE FROM SUBSTANCE MISUSE THROUGH A CONTINUUM OF HIGH-QUALITY SERVICES.**

#### Sumter County Health Impact Data



Population  
**104,165**  
Rural Population  
**35%**

Percentage of Population Uninsured  
**11%**

#### Substance Use Trends

Substance use among patients admitted

**41%**  
Alcohol

**14%**  
Cocaine

**37%**  
Marijuana

**11%**  
Methamphetamine

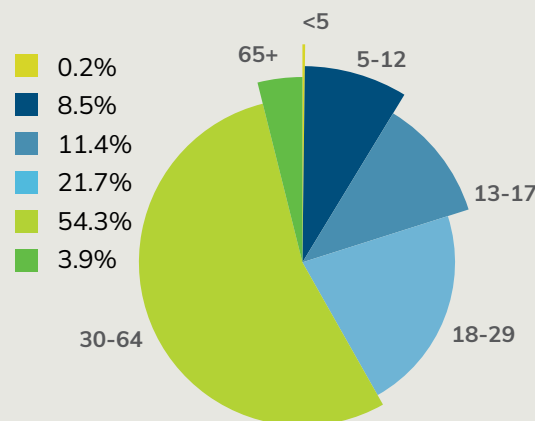
**102** Patients received medication assisted treatment

#### TREATMENT

##### Patient Makeup



##### Percentage of Ages of Patients Served



**1,115** Individuals received a clinical service

#### OUTCOMES

**96%**

Reported at discharge they felt good about their quality of their life.

**95%**

Reported they were satisfied with services they received.

**90%**

Reported at post-discharge their overall alcohol and substance use was reduced or in remission.

#### PREVENTION

**13K**

Individuals reached through health fairs and speaking engagements

**374**

Boxes of Narcan distributed to the community

**17K**

Individuals reached through radio and TV alcohol and opioid use prevention efforts

**10K**

Impressions of social media underage opioid and alcohol prevention messages



Scan the QR code to learn more.





The Forrester Center seeks to strengthen our community by decreasing the negative impact substance use and substance use disorders can have. We strive to be a leader in substance use awareness, education, and treatment and want to meet people where they are to empower change and hope by fostering well-being in a safe, welcoming environment for each person and family we work with.

Spartanburg County Health Impact Data



Population **356,698**  
Rural Population **30%**

Percentage of Population Uninsured **12%**

Substance Use Trends

Substance use among patients admitted

**72%**  
Alcohol

**27%**  
Tobacco

**59%**  
Marijuana

**22%**  
Opioids

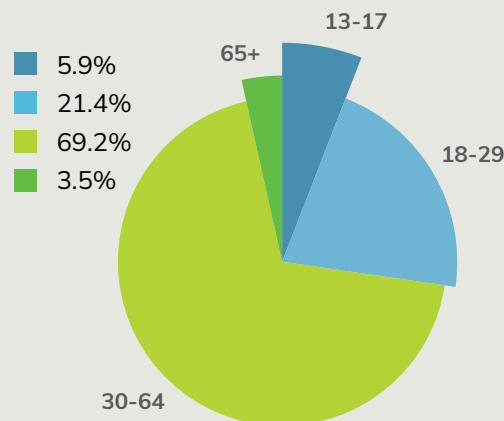
**349** Patients received medication assisted treatment

TREATMENT

Patient Makeup

**32%**  
**68%**

Percentage of Ages of Patients Served



**2,323** Individuals received a clinical service

OUR MISSION

IMPROVING THE LIVES OF OUR COMMUNITY MEMBERS THROUGH PERSON-CENTERED SUBSTANCE USE DISORDER TREATMENT, NON-SUBSTANCE BEHAVIORAL HEALTH THERAPY, AND PREVENTION AND EDUCATION SERVICES.

OUTCOMES

**99%**

Reported at discharge they felt good about their quality of their life.

**97%**

Reported at discharge they were able to handle crisis situations.

**96%**

Reported at post-discharge their overall alcohol and substance use was reduced or in remission.

PREVENTION

**1,145**

Students reached during Red Ribbon Week

**1,290**

Boxes of Narcan distributed to the community

**2,015**

Individuals reached through health fairs

**40**

Environmental scans conducted in local stores to determine current substance use trends



Scan the QR code to learn more.





The Tri-County Commission on Alcohol and Drug Abuse (TCCADA) serves the behavioral health needs of the citizens of Bamberg, Orangeburg and Calhoun counties of South Carolina. We offer a wide array of prevention, intervention and treatment programs in locations convenient to residents of our counties. Located in Orangeburg, South Carolina, the William J. McCord Adolescent Treatment Facility, owned and operated by the TCCADA, is a licensed psychiatric hospital specializing in substance use disorders and co-occurring

disorders for adolescents. With a dedicated, highly trained staff and innovative programs and services, TCCADA takes a proactive approach to fighting substance misuse in our schools, businesses and community. We tailor our programs to meet the ever-changing needs of the communities we serve. Our prevention, intervention and treatment programs spread the message that there is hope and that substance misuse and addiction are preventable and treatable.

**OUR MISSION**

**WE SEEK TO MAXIMIZE INDIVIDUAL HEALTH THROUGH EDUCATION, COMMUNITY OUTREACH AND SERVICE PROVISION FOR THE CITIZENS OF ORANGEBURG, BAMBERG AND CALHOUN COUNTIES.**

**Bamberg, Calhoun & Orangeburg County Health Impact Data**

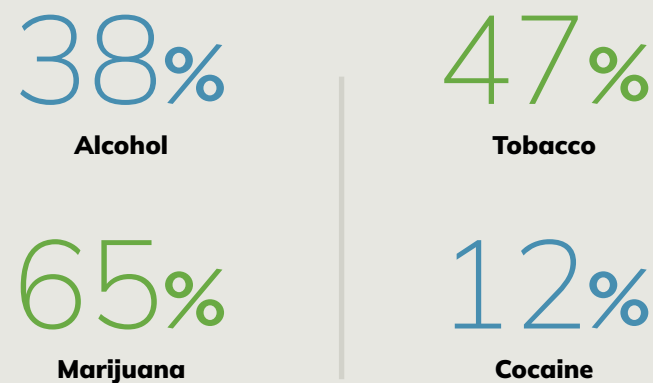


Population  
**109,980**  
Rural Population  
**75%**

Percentage of Population Uninsured  
**11%**

**Substance Use Trends**

Substance use among patients admitted



**OUTCOMES**

**93%**

Reported they were satisfied with services they received.

**93%**

Reported at post-discharge they were able to handle crisis situations.

**95%**

Reported at post-discharge their overall alcohol and substance use was reduced or in remission.

**PREVENTION**

**2,639**

Individuals reached through 35 volunteer, championing and recreational events

**1,196**

Boxes of Narcan distributed to the community

**36M+**

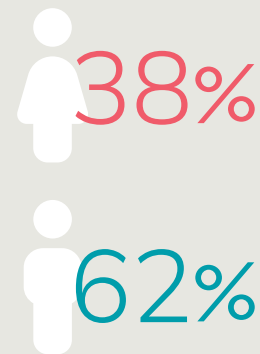
Media impressions delivered through radio and PSAs on opioids, underage drinking and drunk driving

**3.6%**

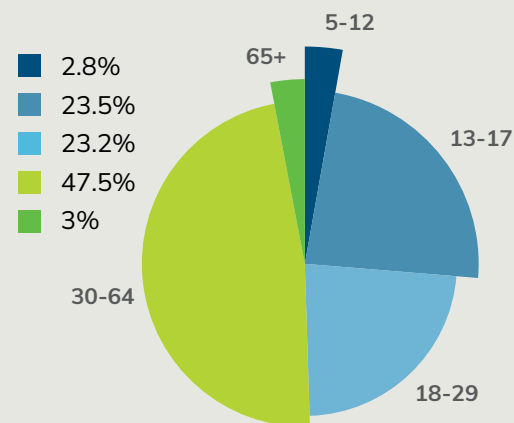
Alcohol compliance check violation rate (5 violations out of 140 compliance checks)

**TREATMENT**

**Patient Makeup**



**Percentage of Ages of Patients Served**



**79** Patients received medication assisted treatment

**1,186** Individuals received a clinical service



Scan the QR code to learn more.





At Trinity Behavioral Care, we believe recovery is possible and that everyone deserves a healthy, fulfilling life. Addiction is a chronic, progressive brain disease that affects individuals, families, and communities, but with compassion and the right support, healing can begin. Our mission is to walk beside each person, offering guidance, encouragement, and tools for lasting change. We provide recovery-centered, trauma-informed services for substance use and emotional or behavioral challenges. No matter how you come to us;

on your own or through a referral; you'll be met with respect, understanding, and hope. Our programs are CARF-accredited, DPH-licensed, and OSUS-certified, delivered by dedicated professionals committed to dignity, purpose, and recovery.

**OUR MISSION**

**TO PREVENT/REDUCE THE IMPACT OF ALCOHOL AND OTHER DRUG ABUSE/ADDICTION IN MARION, DILLON, AND MARLBORO COUNTIES ON THE QUALITY OF LIFE THROUGH THE IMPLEMENTATION OF EFFECTIVE, EFFICIENT, MEANINGFUL, QUALITY PRIMARY PREVENTION, INTERVENTION AND TREATMENT SERVICES.**

**Dillon, Marion & Marlboro County Health Impact Data**

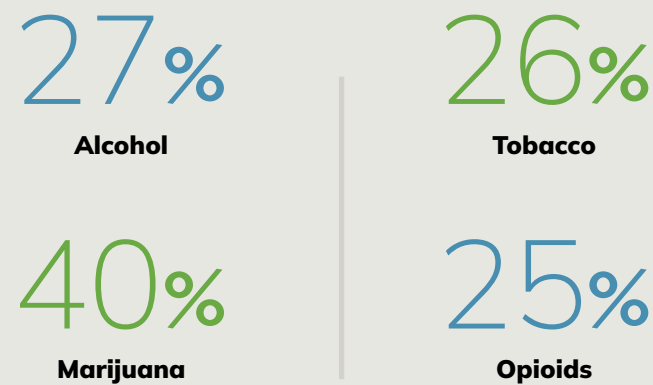


Population **66,147**  
Rural Population **67%**

Percentage of Population Uninsured **12%**

**Substance Use Trends**

Substance use among patients admitted



**OUTCOMES**

**100%**

Reported at post-discharge they felt good about their quality of their life.

**95%**

Reported they would recommend the services of our agency.



**PREVENTION**

**2,637**

Elementary and middle school students received substance use prevention education

**1,024**

Boxes of Narcan distributed to the community

**86K+**

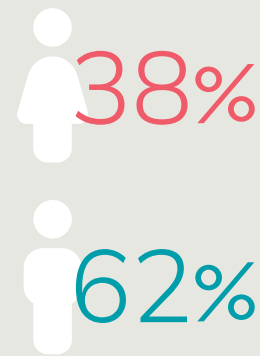
Media impressions delivered by substance use and recovery social media posts

**414**

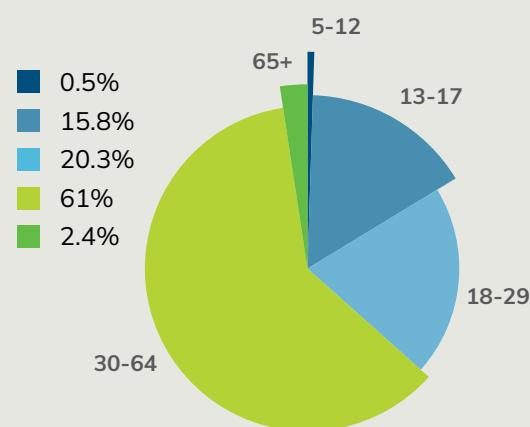
Individuals participated in alternative events (Skating Party)

**TREATMENT**

**Patient Makeup**



**Percentage of Ages of Patients Served**



**545** Patients received medication assisted treatment

**1,765** Individuals received a clinical service



Scan the QR code to learn more.





Westview believes that the physical health and prosperity a person experiences are directly related to factors much less perceptible. Westview also recognizes that due to a variety of life stressors, many people are at risk of developing negative behavior patterns in order to cope with the daily demands of job, home, relationships, finances, etc. This may manifest itself as feelings of depression and anxiety, lack of self-confidence, low self-esteem, or feeling overwhelmed and unable to cope. We offer affordable, accessible

treatment services to assist individuals and families with developing alternative, healthy behaviors. These services include general outpatient, medication-assisted treatment, and remote services. We also offer prevention services to educate and inform our service population as well as shape the environment of our community.

**OUR MISSION**

**TO ASSIST THE CITIZENS OF NEWBERRY AND SALUDA COUNTIES IN THE PREVENTION OF, TREATMENT OF, AND RECOVERY FROM NEGATIVE BEHAVIORAL HEALTH ISSUES BY OFFERING EFFECTIVE, AFFORDABLE, AND TIMELY SERVICES.**

**Newberry & Saluda County Health Impact Data**

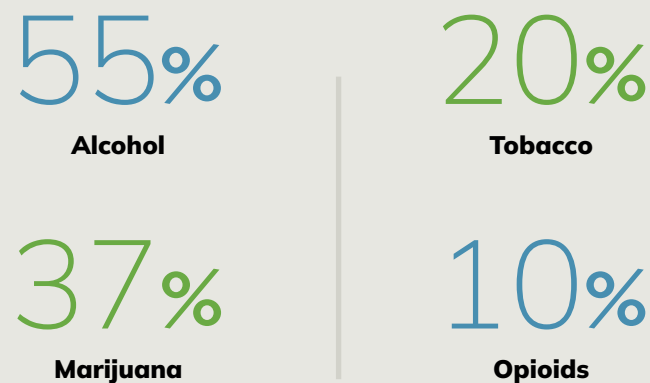
Population **57,948**

Rural Population **77%**

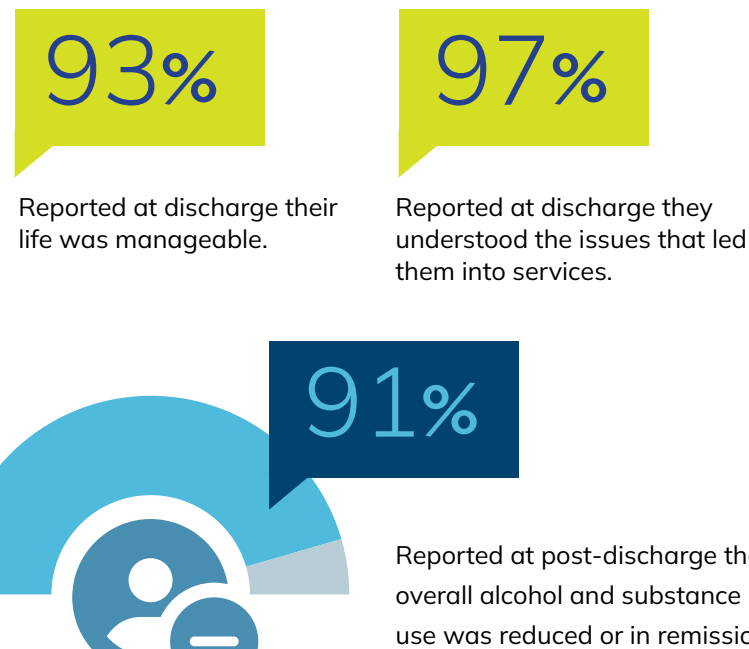
Percentage of Population Uninsured **13%**

**Substance Use Trends**

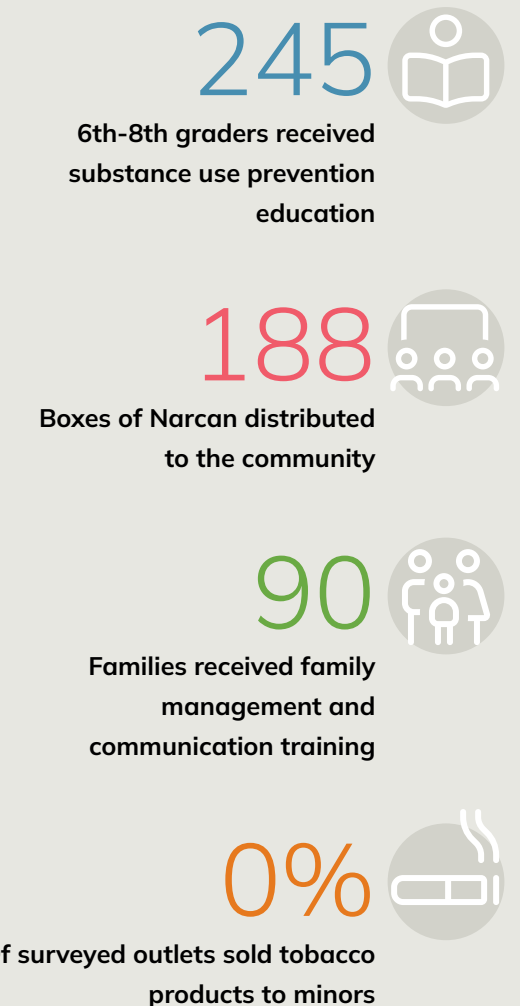
Substance use among patients admitted



**OUTCOMES**

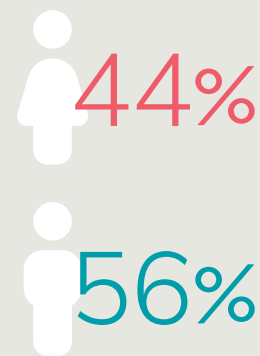


**PREVENTION**

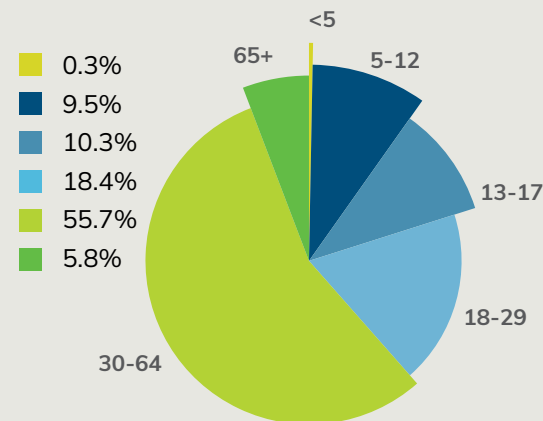


**TREATMENT**

**Patient Makeup**



**Percentage of Ages of Patients Served**



**45** Patients received medication assisted treatment



Individuals received a clinical service



Scan the QR code to learn more.



## Data Sources

MEASURE	SOURCE	YEAR
Resident Population	Census Population Estimates Program	2023
% Rural Population living in census-defined rural areas	Decennial Census Demographic and Housing Characteristics File	2020
% of population under age 65 without health insurance	Small Area Health Insurance Estimates	2022
Clients Served Demographics	Agency CareLogic EHR	FY25
Client Outcome Measures	Agency CareLogic EHR	FY25
Prevention Data	Agency Prevention Data	FY25



[bhsasc.org](http://bhsasc.org)